

COSMIC CARBONE 40 (clincher version)

Use: for road bike use only. Any other use (such as on a tandem, cyclo-cross bike, or off-road use...) is highly inadvisable, is the sole responsibility of the user and voids the Mavic warranty.

Recommended maximum weight of the cyclist and equipment: 100 kg.

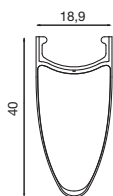
WHEEL WEIGHT WITHOUT QUICK-RELEASE SKEWER AND WITHOUT TYRE

Front	670 g
Rear M11	890 g
Rear ED11	875 g

WHEEL REFERENCES

Front	359 914 10
Rear M11	359 915 11
Rear ED11	359 916 12
Pair M11	359 917 14
Pair ED11	359 918 14

RIMS



SALES REFERENCES Front: 329 782 10
Rear: 329 782 13



Ø VALVE HOLE
Ø: 6.5 mm



RECOMMENDED TYRE WIDTH

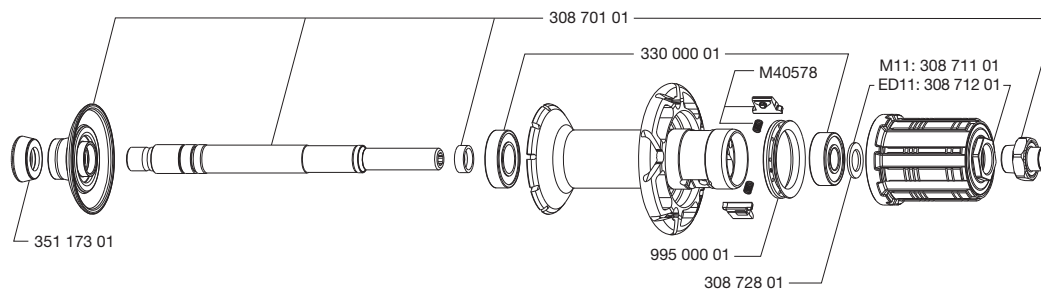
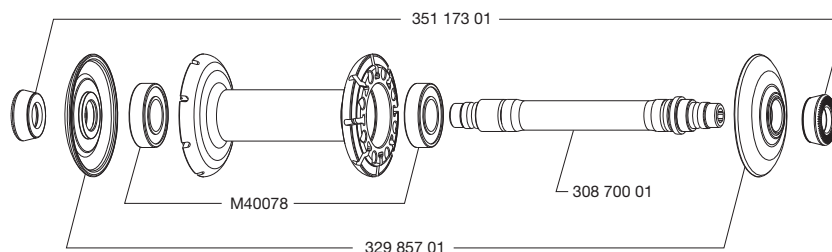
Dimensions: ETRTO 622x13C
Recommended clincher width: 19 to 28 mm

When replacing the rear rim:

1. With the valve hole near you, the two raised indicator bumps must be to the right of the valve hole.
2. The first spoke to the right of the valve hole is a non-traction spoke and should be inserted in the drive side hub.

HUBS

MAINTENANCE: Clean with a dry cloth or soapy water if necessary.
Do not use a high-pressure washer.



WHEEL BUILDING

REFERENCES AND LENGTHS:

Front and rear non-drive side: 329 790 01, length 277 mm (per 10, integrated nipples)
Drive side: 329 789 01, length 275 mm (per 10, integrated nipples)

FEATURES:

Black, swaged, bladed, straight pull steel spokes with integrated aluminum Fore nipples

LACING PATTERN:

Front: radial
Rear: 2-crossed drive side, radial non-drive side

TENSION:

Front: 90 to 100 kg
Rear drive side: 130 to 140 kg

ACCESSORIES

WHEELS SUPPLIED WITH:

- BR 601 front quick-release skewer M40149
- BR 601 rear quick-release skewer M40150
- Spoke wrench M40494 (with rear wheel)
- Mavic brake pads for braking on a carbon brake track: HG/Sram/Mavic 120 131 01 or ED 120 132 01
- Yksion Pro SSC GripLink 23 mm front clincher (325 930 23)
- Yksion Pro SSC PowerLink 23 mm rear clincher (325 931 23)
- Mavic butyl inner tubes (127 385 01)
- ED11 12D locking ring (with rear wheel ED11) 108 317 01
- Technical manual
- Sheet of Mavic stickers

MAINTENANCE

Specific tool:

- Front bearing: M40120
- Rear bearing: M40120 & 351 266 01
- Spoke wrench: M7/ 6 notches M40652

Refer to the website for quick and convenient access to maintenance information (replacement of an axle, bearings, free wheel, spokes, and rims)

www.tech-mavic.com