

COSMIC CARBONE ULTIMATE 14

Use: for road bike use only. Any other use (such as on a tandem, cyclo-cross bike, or off-road use...) is highly inadvisable, is the sole responsibility of the user and voids the Mavic warranty.

Recommended maximum weight of the cyclist and equipment: 100 kg.

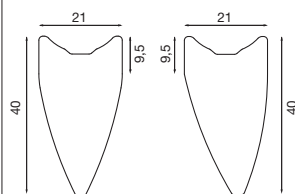
WHEEL WEIGHT WITHOUT QUICK-RELEASE SKEWER AND WITHOUT TUBULAR

Front	520 g
Rear M11	680 g
Rear ED11	665 g

WHEEL REFERENCES

Front	356 491 10
Rear M11	356 492 11
Rear ED 11	356 493 12
Pair M11	356 494 14
Pair ED11	356 495 14

RIMS



Ø VALVE HOLE

Ø: 6.5 mm

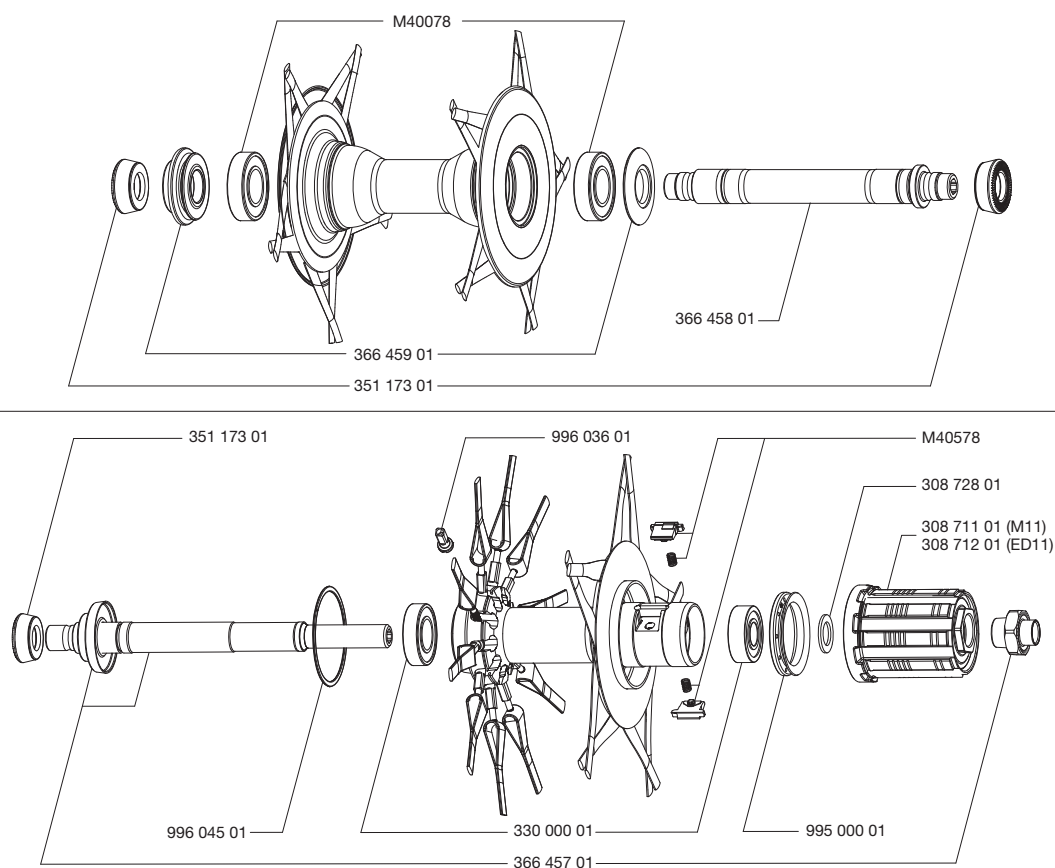


RECOMMENDED TYRE WIDTH

Dimensions: Ø 700 Tubular
Recommended tubular width: 19 to 28 mm

HUBS

MAINTENANCE: Clean with a dry cloth or soapy water if necessary.
Do not use a high-pressure washer.



WHEEL BUILDING

FEATURES: Unidirectional R2R carbon fiber spokes with brass ABS type spoke nipples

LACING PATTERN:

Front: 2-cross lacing on both sides
Rear: 2-crossed drive side, radial non-drive side



ACCESSORIES

WHEELS SUPPLIED WITH:

- BR 601 titanium front quick-release skewer 32348501
- BR 601 titanium rear quick-release skewer 32348601
- Wheel bags M40135
- Mavic brake pads for braking on a carbon brake track: HG/Sram/Mavic 120 131 01 or ED 120 132 01
- Valve extender 118 952 01
- Computer magnet M40540 (with front wheel)
- Multifunction adjustment wrench 325 423 01
- Yksion Pro SSC GripLink 23 mm front tubular (325 928 23)
- Yksion Pro SSC PowerLink 23 mm rear tubular (325 929 23)
- ED11 12D locking ring (with rear wheel ED11) 108 317 01
- User manual
- Sheet of Mavic stickers

MAINTENANCE

Specific tool:

- Front bearing: M40120
- Rear bearing: M40120

Refer to the website for quick and convenient access to maintenance information (replacement of an axle, bearings, free wheel, spokes, and rims)

www.tech-mavic.com