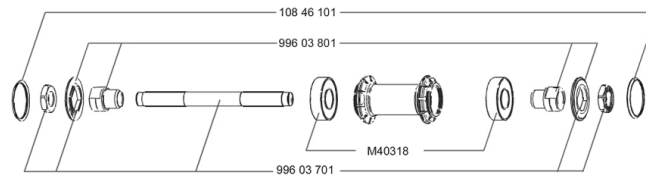


REFERENCES WHEELS

127969	AKSIUM White 23 FRT WTS	128064	AKSIUM Red 23 FRT WTS
127972	AKSIUM White 23 M10PR WTS	128067	AKSIUM Red 23 M10PRWTS
127973	AKSIUM White 23ED11PR WTS	128068	AKSIUM Red 23 ED11PRWTS



MAVIC *Aksium S***DELIVERED WITH**

BR101 quick releases	
Rim tape	
User guide	

Specifications**RIMS**

- **Material** : 6106 Aluminum
- **Color** : Black anodized with white or red stickers
- **Height** : 24 mm
- **Joint** : sleeved
- **Drilling** : traditional
- **Eyelet** : H2 technology
- **Brake track** : UB Control
- **Valve hole diameter** : 6.5 mm
- **Tyre** : clincher
- **ETRTO size** : 622x15C
- **Recommended tyre sizes** : 19 to 32 mm

SPOKES

- **Material** : steel
- **Shape** : straight pull, bladed
- **Color** : black
- **Nipples** : brass, self lock concept
- **Count** : 20 front and rear
- **Lacing** : radial front and rear non-drive side, crossed 2 rear drive side

WHEEL HUB

- **Front and rear bodies** : aluminum
 - **Color** : black
 - **Front and rear axle material** : steel
- QRM
FTS-L steel

WHEEL WEIGHTS

Wheel weight 800