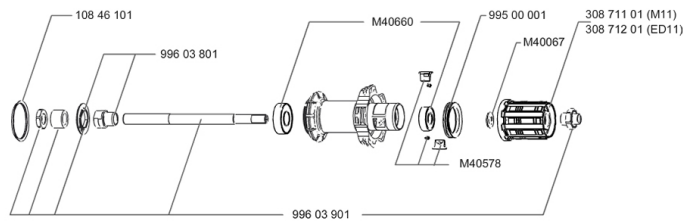


**REFERENCES WHEELS**

127970	AKSIUM White 23 M10 WTS	128065	AKSIUM Red 23 M10 WTS
127971	AKSIUM White 23 ED11 WTS	128066	AKSIUM Red 23 ED11 WTS
127972	AKSIUM White 23 M10PR WTS	128067	AKSIUM Red 23 M10PRWTS
127973	AKSIUM White 23ED11PR WTS	128068	AKSIUM Red 23 ED11PRWTS



**MAVIC** *Aksium S***DELIVERED WITH**

BR101 quick releases	
Rim tape	
User guide	

**Specifications****RIMS**

- **Material** : 6106 Aluminum
- **Color** : Black anodized with white or red stickers
- **Height** : 24 mm
- **Joint** : sleeved
- **Drilling** : traditional
- **Eyelet** : H2 technology
- **Brake track** : UB Control
- **Valve hole diameter** : 6.5 mm
- **Tyre** : clincher
- **ETRTO size** : 622x15C
- **Recommended tyre sizes** : 19 to 32 mm

**SPOKES**

- **Material** : steel
- **Shape** : straight pull, bladed
- **Color** : black
- **Nipples** : brass, self lock concept
- **Count** : 20 front and rear
- **Lacing** : radial front and rear non-drive side, crossed 2 rear drive side

**WHEEL HUB**

- **Front and rear bodies** : aluminum
- **Color** : black
- **Front and rear axle material** : steel QRM  
FTS-L steel

**WHEEL WEIGHTS**

Wheel weight 935