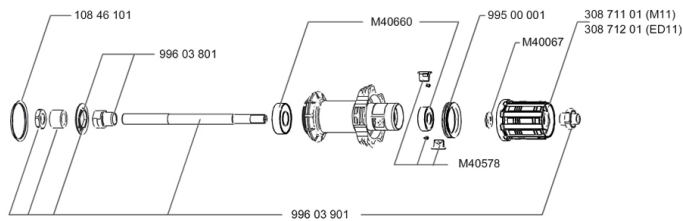


REFERENCES WHEELS

| | | | |
|--------|---------------------------|--------|-------------------------|
| 127970 | AKSIUM White 23 M10 WTS | 128065 | AKSIUM Red 23 M10 WTS |
| 127971 | AKSIUM White 23 ED11 WTS | 128066 | AKSIUM Red 23 ED11 WTS |
| 127972 | AKSIUM White 23 M10PR WTS | 128067 | AKSIUM Red 23 M10PRWTS |
| 127973 | AKSIUM White 23ED11PR WTS | 128068 | AKSIUM Red 23 ED11PRWTS |



MAVIC *Aksium S***DELIVERED WITH**

| | |
|----------------------|--|
| BR101 quick releases | |
| Rim tape | |
| User guide | |

Specifications**RIMS**

- **Material** : 6106 Aluminum
- **Color** : Black anodized with white or red stickers
- **Height** : 24 mm
- **Joint** : sleeved
- **Drilling** : traditional
- **Eyelet** : H2 technology
- **Brake track** : UB Control
- **Valve hole diameter** : 6.5 mm
- **Tyre** : clincher
- **ETRTO size** : 622x15C
- **Recommended tyre sizes** : 19 to 32 mm

SPOKES

- **Material** : steel
- **Shape** : straight pull, bladed
- **Color** : black
- **Nipples** : brass, self lock concept
- **Count** : 20 front and rear
- **Lacing** : radial front and rear non-drive side, crossed 2 rear drive side

WHEEL HUB

- **Front and rear bodies** : aluminum
- **Color** : black
- **Front and rear axle material** : steel
QRM
FTS-L steel

WHEEL WEIGHTS

Wheel weight 935