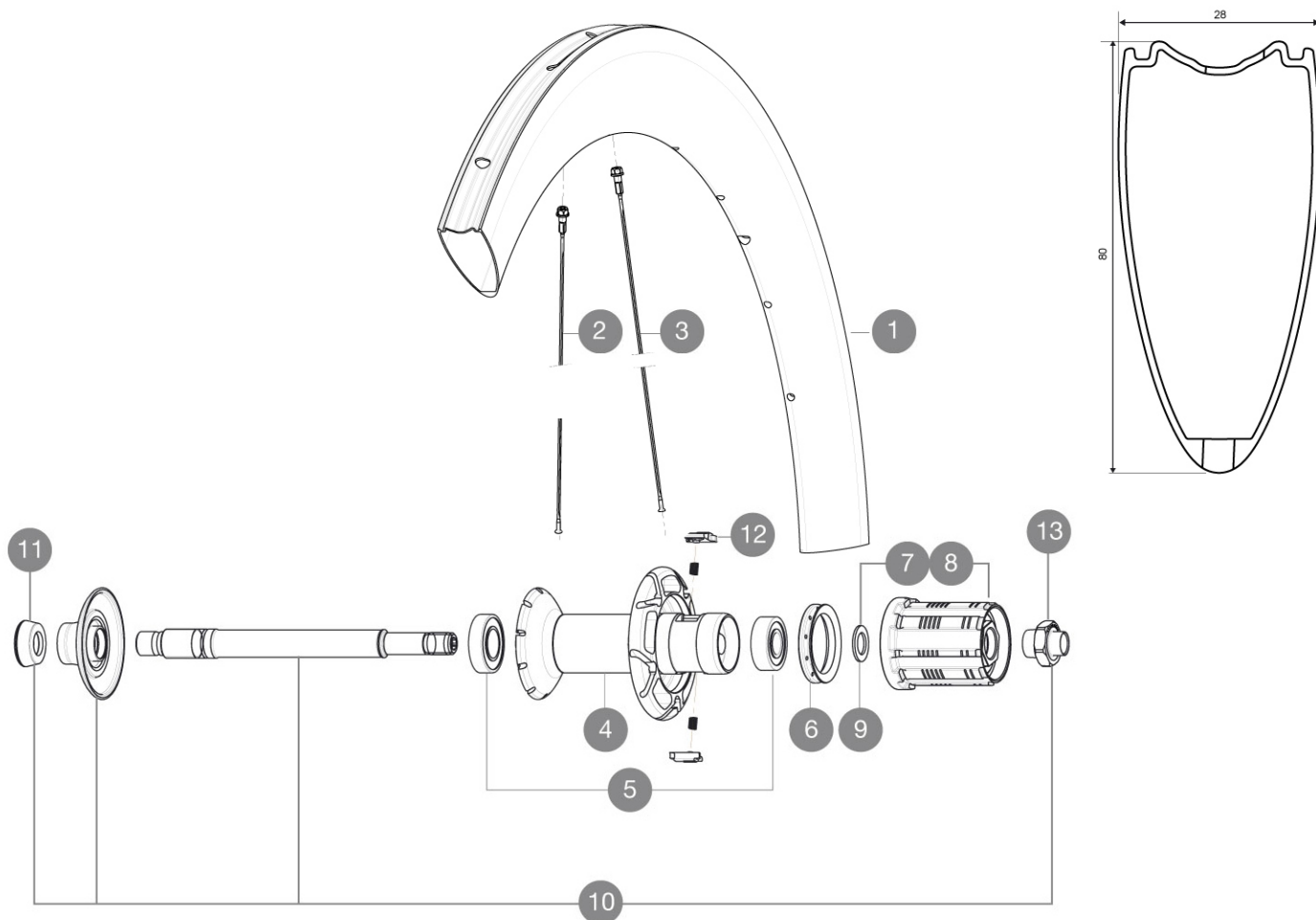


## REFERENCES WHEELS

352082 Cosmic CXR 60 T Rr

352083 Cosmic CXR 60 T Rr



### RIMS



&NBSP;:

1	LV2403600	KIT REAR RIM CXR60T 2016
1	L32979300	KIT REAR RIM CXR 60 TUBULAR - while stock last

### SPOKES

2	L32979600	KIT 10 AERO FT/NDS CXR 60 T BLK SPOKE 255mm
3	L32979500	KIT 10 AERO DS CXR 60 T BLACK SPOKE 252mm

### HUB SHELLS

4	N/A	HUB BODY
5	L33000000	REAR HUB B9+6901 BEARINGS 2013
6	L99500000	FTSL/FTSX FREEHUB BODY SEAL
7	L30871100	FTS-L ROAD FREEWHEEL BODY HG11 8/9 compatible
8	L30871200	FTS-L ROAD FREEWHEEL BODY ED11 8/9 compatible
9	L30872800	SET OF 3 INTERNAL SILVER SPACERS 9mm FTS-L
10	LV2250300	KIT REAR AXLE AERO HUB CXR/CC40/CC SLS/CC SLE/COSMIC PRO CAR
11	L35117300	FT/RR FORK REST R-SYS/CC ULTIMATE > 2013/KSY PRO CARB T
12	LM4057800	FTSL PAWLS KIT (ROAD WHEELS)
13	LV2373100	KIT NUT FOR ROAD ALLOY THROUGH AXLE 9mm

# MAVIC Cosmic CXR 60 T

## DELIVERED WITH

BR601 quick releases	
Wheelbags	
CXR specific carbon brake pads	
Valve extender	
Multifonction adjustment wrench	
User guide	

## Specifications

### RIMS

- **Material** : 100% woven 3K carbon fiber
- **Height** : 60 mm, Width 27 mm with CX01 grooves
- **Drilling** : traditional
- **Brake track** : carbon
- **Valve hole diameter** : 6.5 mm
- **Tyre** : tubular
- **ETRTO size** : 28" tubular
- **Recommended tyre size** : 23 mm

### SPOKES

- **Material** : steel
- **Shape** : straight pull, bladed, double butted
- **Nipples** : aluminum, ABS
- **Count** : front 16, rear 20
- **Lacing** : radial front and rear non-drive side, crossed 2 rear drive side

### WHEEL HUB

- **Front and rear bodies** : carbon center tube and aluminum flanges
- **Axle material** : aluminum  
Adjustable sealed cartridge bearings
- **Freewheel** : FTS-L steel

### WHEEL WEIGHTS

Wheel weight 880