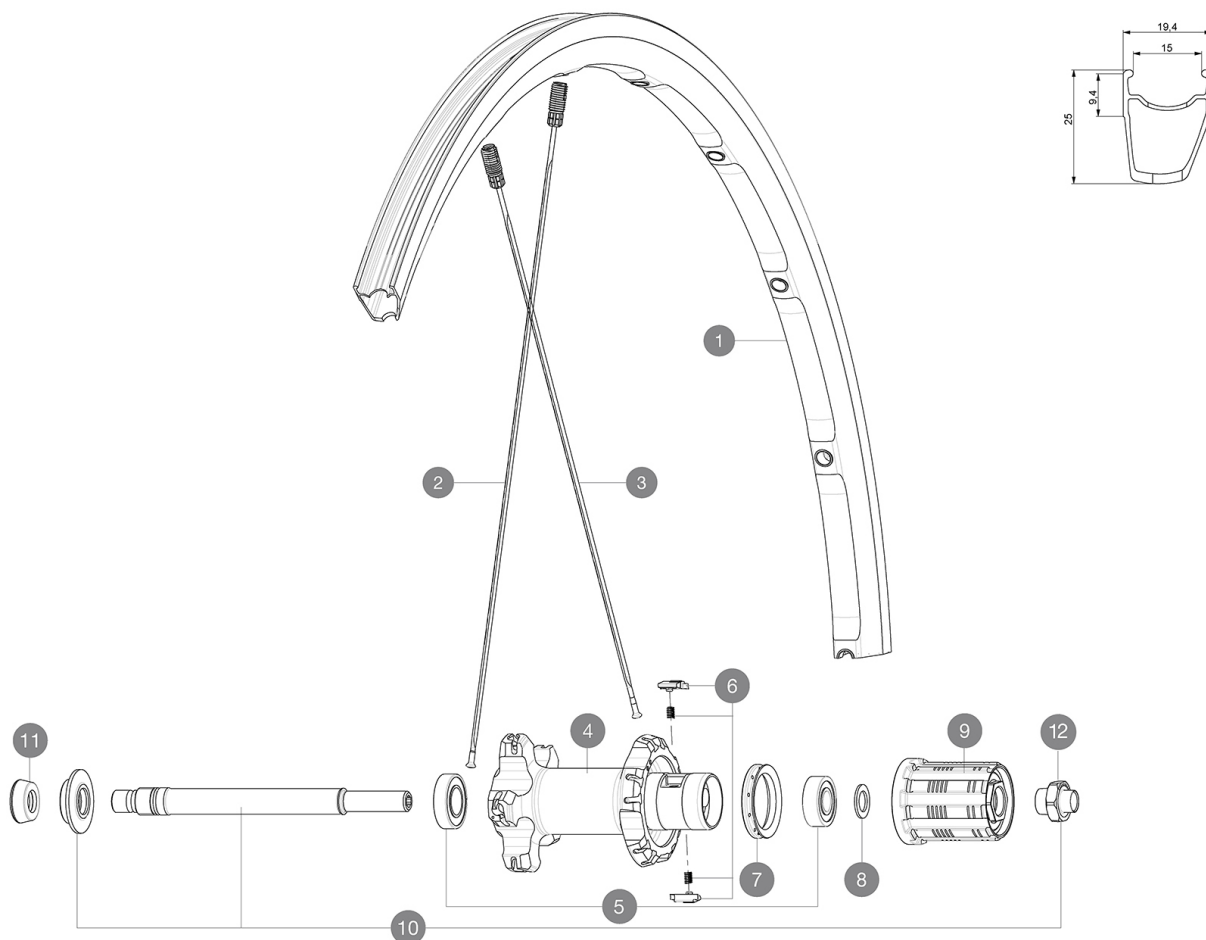


REFERENCES WHEELS



RIMS



&NBSP;:

1	LV2400500	KIT REAR KSYRIUM ELITE RED S BLACK RIM
1	L33002300	KIT REAR KSYRIUM ELITE S BLACK/SILVER RIM

SPOKES

2	LV2270900	KIT 10 NDS KSYRIUM ELITE 11 SILV SPK 301mm
2	L12030700	KIT 10 NDS KSYRIUM ELITE 11/ELITE S BLK SPK 301mm
3	LV2270800	KIT 10 DS KSYRIUM ELITE 11 SILV SPK 275mm
3	L12030600	KIT 10 DS KSYRIUM ELITE 11/ELITE S BLK SPOKE 275mm

HUB SHELLS

4	N/A	HUB BODY
4	N/A	HUB BODY
5	L33000000	REAR HUB B9+6901 BEARINGS 2013
6	LM4057800	FTSL PAWLS KIT (ROAD WHEELS)
7	L99500000	FTSL/FTSX FREEHUB BODY SEAL
8	L30872800	SET OF 3 INTERNAL SILVER SPACERS 9mm FTS-L
9	L30871200	FTS-L ROAD FREEWHEEL BODY ED11 8/9 compatible
9	L30871100	FTS-L ROAD FREEWHEEL BODY HG11 8/9 compatible
10	LV2250500	KIT REAR AXLE KSYRIUM SLE/SL/ELITE/PRO EXALITH/ALLROAD ELIT
11	L35117300	FT/RR FORK REST R-SYS/CC ULTIMATE > 2013/KSY PRO CARB T
12	LV2373100	KIT NUT FOR ROAD ALLOY THROUGH AXLE 9mm

MAVIC *Ksyrium Elite S***DELIVERED WITH**

BR301 quick releases	
Multifonction adjustment wrench	
User guide	

Specifications**RIMS**

- **Material** : Maxtal
- **Height** : front 22 mm, rear 25 mm asymmetrical
- **Joint** : SUP
- **Drilling** : Fore
- **Brake track** : UB Control
- **Weight reduction** : ISM
- **Valve hole diameter** : 6.5 mm
- **Tyre** : clincher
- **ETRTO size** : 622x15C
- **Recommended tyre sizes** : 19 to 32 mm

SPOKES

- **Material** : steel
- **Shape** : straight pull, bladed, front double butted
- **Nipples** : Fore integrated aluminum
- **Count** : front 18, rear 20
- **Lacing** : front radial, rear Isopulse

WHEEL HUB

- **Front and rear bodies** : aluminum
 - **Axle material** : aluminum
- Adjustable sealed cartridge bearings
- **Freewheel** : FTS-L steel

WHEEL WEIGHTS

Wheel weight 840