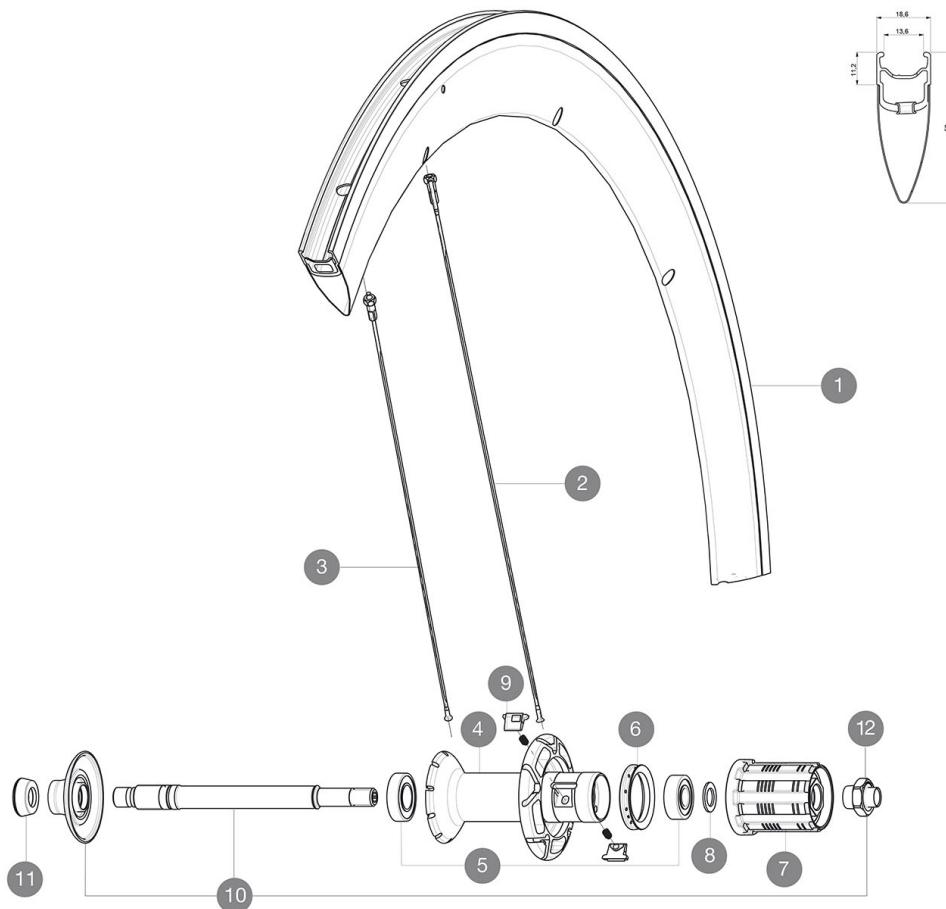


参照ホイール

P51101 CosmicCarbSLEPrBlackM



RIMS



&NBSP;:

1	LV4091700	KIT REAR RIM COSMIC CARBON SLE/COSMIC PRO CARBON
1	LV2400300	KIT REAR COSMIC CARBONE SLE RIM BLACK REF STICKER - white st

SPOKES

2	L32979100	10 BLK DRV SPOKES CC SLE CLINCHER 2013 286mm
3	L32976800	10 BLK AERO SPOKES FRONT/NON DRIVE SIDE CXR 60 C 289mm

HUB SHELLS

4	N/A	HUB BODY
5	L33000000	REAR HUB B9+6901 BEARINGS 2013
6	L99500000	FTSL/FTSX FREEHUB BODY SEAL
7	L30871200	FTS-L FREEWHEEL BODY ED11 2013 (8 or 9mm axle compatible)
7	L30871100	FTS-L FREEWHEEL BODY HG11 2013 (8 or 9mm axle compatible)
8	L30872800	SET OF 3 INTERNAL SILVER SPACERS 9mm FTS-L 2013
9	LM4057800	FTSL PAWLS KIT (ROAD WHEELS)
10	LV2250300	KIT REAR AXLE AERO HUB CXR/CC40/CC SLS/CC SLE/COSMIC
11	L35117300	FRONT OR REAR FORK REST KIT R-SYS 2013
12	LV2373100	KIT NUT FOR ROAD ALLOY THROUGH AXLE 9mm



Cosmic Carbone SLE

付属品

BR601 quick releases	
Wheelbags	
Exalith brake pads	
Multifonction adjustment wrench	
User guide	

Specifications

リム

- Material : Maxtal and 12K carbon fiber
- Height : 52 mm
- Joint : SUP
- Drilling : traditional
- Brake track : Exalith 2
- Weight reduction : ISM
- Valve hole diameter : 6.5 mm
- Tyre : clincher
- ETRTO size : 622x13C
- Recommended tyre sizes : 19 to 28 mm

スポーク

- Material : steel
- Shape : straight pull, bladed, double butted
- Nipples : front aluminum, rear brass, ABS
- Count : front 16, rear 20
- Lacing : radial front and rear non-drive side, crossed 2 rear drive side

ホイールハブ

- Front and rear bodies : aluminum
- Axle material : aluminum
- Adjustable sealed cartridge bearings
- Freewheel : FTS-L steel

ホイールの重み

890