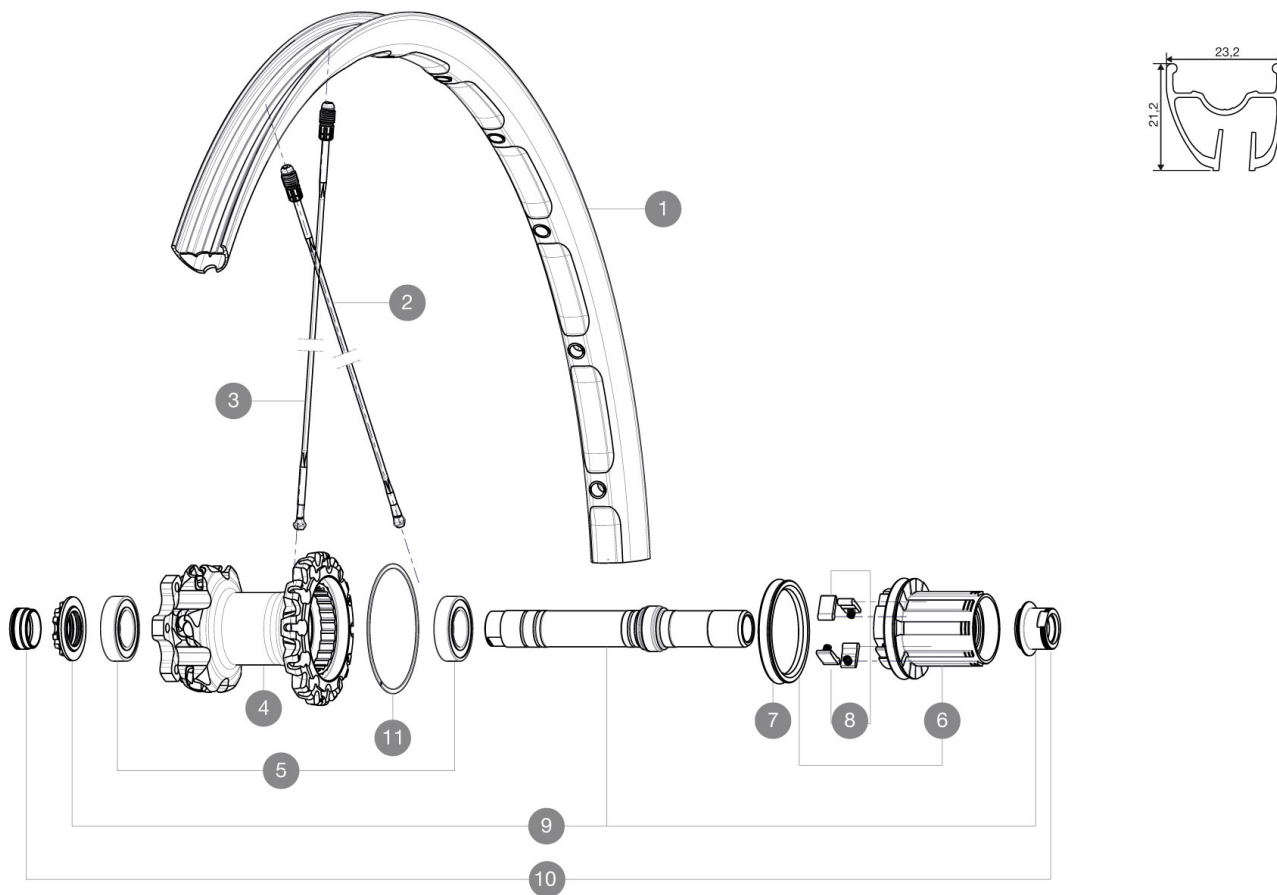


REFERENCES WHEELS



RIMS



VALVE HOLE Ø (MM): 6.5

| | | |
|---|-----------|----------------------------------|
| 1 | LV2312100 | "KIT REAR CROSSMAX ST 27,5" RIM" |
|---|-----------|----------------------------------|

SPOKES

| | | |
|---|-----------|---|
| 2 | LV2380200 | "KIT 10 DS CROSSMAX ST 27,5" ALU SPK 251,5mm" |
| 3 | LV2380300 | KIT 10 NDS CROSSMAX ST 27,5" ALU SPK 281,5mm |

HUB SHELLS

| | | |
|----|-----------|---|
| 4 | N/A | HUB BODY |
| 5 | LM4007600 | HUB BEARINGS 17x30x7 6903 x 2 |
| 6 | L35126000 | ITS-4 FREEWHEEL BODY + SEAL 2013 (NO PAWLS) |
| 7 | L99610700 | ITS-4 FREEWHEEL SEAL |
| 8 | L99610600 | PAWLS KIT FOR ITS-4 (OR TS-2) |
| 9 | L30870400 | REAR QRM + AXLE KIT ITS4 135mm from 2012 |
| 10 | L30872200 | FRAME SUPPORT ITS-4 135mm REAR AXLE > 2012 |
| 11 | L30871800 | ELASTIC RING 56mm diam. ITS-4 20 SPOKES |

MAVIC Crossmax ST

DELIVERED WITH

| | |
|---------------------------------|--|
| BX601 rear quick release | |
| BX601 rear quick release | |
| UST valve and accessories | |
| UST valve and accessories | |
| Front 15 mm adapters | |
| Front 15 mm adapters | |
| Rear QR adapters | |
| Rear QR adapters | |
| Rear 12x142mm adapters | |
| Rear 12x142mm adapters | |
| Specific disc bolts | |
| Specific disc bolts | |
| Computer magnet (front wheel) | |
| Computer magnet (front wheel) | |
| Multifonction adjustment wrench | |
| Multifonction adjustment wrench | |
| User guide | |
| User guide | |