



# Ksyrium Pro Carbon SL C

## 参照ホイール

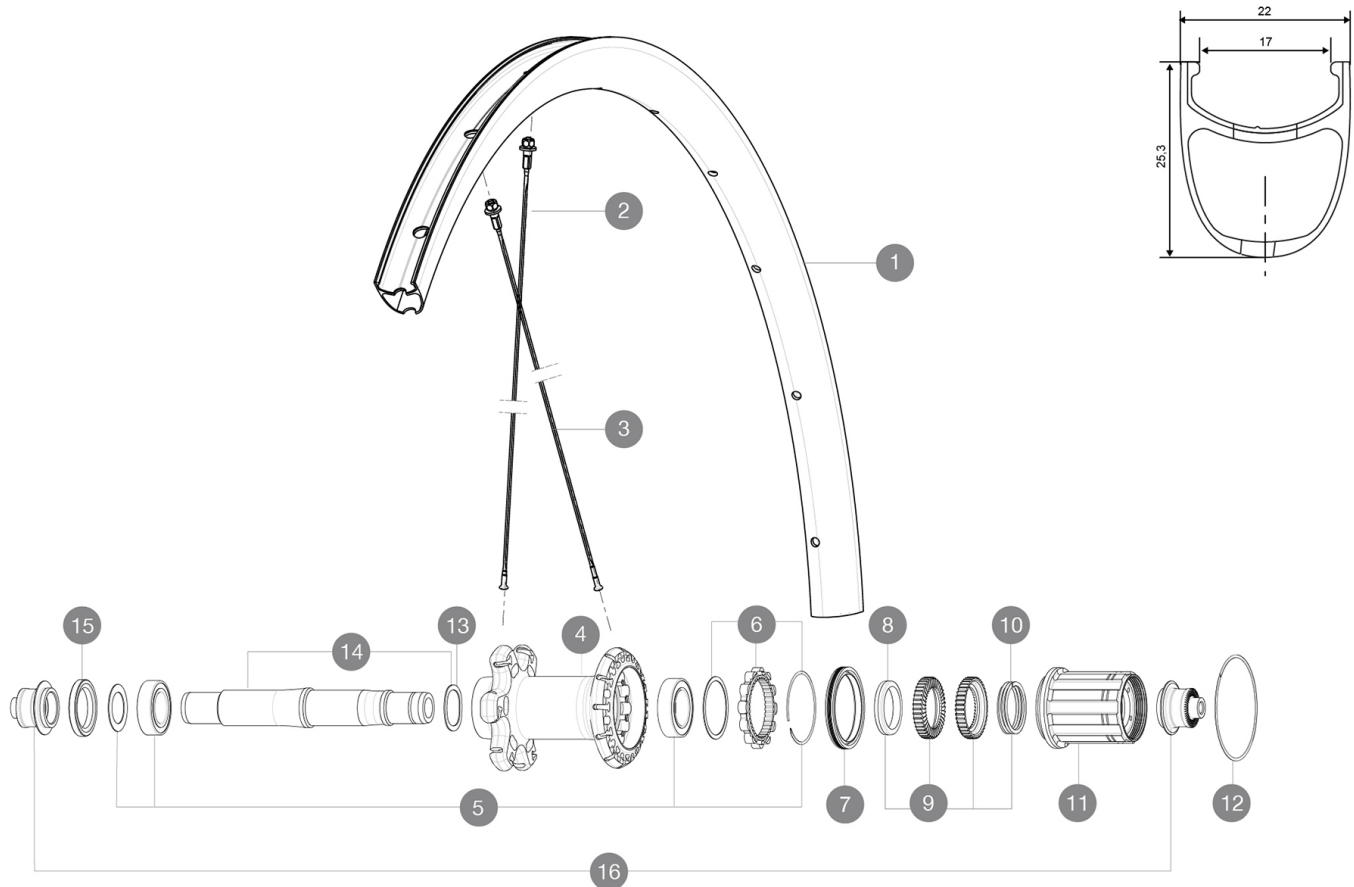
R51301 KProCarbSL C Rr

ASTM CATEGORY 1 : road only

For a longer longevity of the wheel, Mavic recommends that the total weight supported by the wheels doesn't exceed 120kg, bike included

Recommended tyre sizes: 25 to 52 mm

Max. Pressure: 25mm 7.7 bars - 110 PSI



### RIMS



バルブ穴径 ( MM ) : 6,5 :

1	LV2737500	KIT REAR RIM KSYRIUM PRO CARBON SL UST
1	LV2401500	KIT RR RIM KSYRIUM PRO CARBON SL Clincher - while stock last
	LV2690100	KIT CARBON RIM TAPE 21x622mm (SPECIAL RIM TAPE)
	LV3720100	25mm UST Tape for 19 to 22mm Road Rims

14	LV2251200	ID360 AXLE UB
15	LV2250900	KIT ID360 HUB THREADED CAP for UB model (small)
16	LB4989400	Rear axle adapters 9mm QR

### TYRES

17	L37805400	Yksion Pro PowerLink SSC 25
----	-----------	-----------------------------

### SPOKES

2	LV227150001	KIT 12 FT KSY PRO CARB SL D/NDS KSY PRO CARB SL SPK 291mm
2	LV3663300	KIT 12 FRT KSYR PRO CARB SL UST Disc + NDS KSYR PRO CARB
3	LV3663200	12 DS KSY PRO CARB SL UST/UST Disc/C Disc/T Disc BUTTED
3	LV227140001	KIT 12 DS KSYRIUM PRO CARB SL T SPOKE 273mm - while stock la

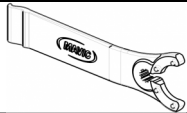
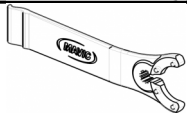
### HUB SHELLS

4	N/A	HUB BODY
5	LV2560100	KIT ID360 BEARINGS 15/26/7 + 17/28/7
6	LV2252700	KIT ID360 INSERT SHAPED EAR LOBE > 2017
7	LV2251600	ID360 SEAL + GREASE
8	LV2500500	Kit 3 ID360 pad for noise reduction
9	LV2251700	ID360 2 RATCHETS + SPRING + GREASE
10	LV2251800	KIT 3 ID360 ROAD SPRINGS
11	LV3430100	HG11 Freewheel Body ID360
12	LV2252200	KIT 2 REAR HUB RETENTION RINGS 48mm
13	LV2251500	3 ID360 WAVE WASHERS



# Ksyrium Pro Carbon SL C

## 付属品

BR601 quick releases	
Rim tape	
Carbon brake pads	
Carbon brake pads	
Carbon brake pads	
User guide	
Rim tape	
Rim tape	
Multifunction adjustment wrench (325 423 01) 1	
Multifunction adjustment wrench (325 423 01) 1	
User guide	
User guide	

## COMPATIBILITY

Freewheel: Shimano/Sram or Campagnolo, convertible to XD-R with optional driver body	
Front axle: Quick Release only	
Front axle: Quick Release only	
Rear axle: Quick Release only	
Rear axle: Quick Release only	

## Specifications

### リム

- Material : 3K carbon fibers
- Height : 25mm
- Material : 3K carbon fibers
- Material : 3K carbon fibers
- Drilling : traditional
- Brake track : carbon with TgMAX technology
- Valve hole diameter : 6.5 mm
- Tyre : clincher
- ETRTO size : 622x17C
- Height : 25mm
- Height : 25mm
- Recommended tyre sizes : 25 to 52 mm
- Drilling : traditional
- Drilling : traditional
- Brake track : carbon with TgMAX technology
- Brake track : carbon with TgMAX technology
- Brake track : carbon
- Brake track : carbon
- Valve hole diameter : 6.5 mm
- Valve hole diameter : 6.5 mm
- Tyre : clincher
- Tyre : clincher
- Internal width : 17 mm
- Internal width : 17 mm
- ETRTO size : 622x17C
- ETRTO size : 622x17C

### ホイールハブ

- Front and rear bodies : aluminum
- Axle material : aluminum
- Sealed cartridge bearings
- Freewheel : Instant Drive 360
- Front and rear bodies : aluminum
- Front and rear bodies : aluminum
- Axle material : aluminum
- Axle material : aluminum
- Sealed cartridge bearings
- Sealed cartridge bearings
- Freewheel : Instant Drive 360
- Freewheel : Instant Drive 360

### VERSIONS

- Color : Black only
- Color : Black only

### ホイールの重み

ホイール重量 ( クイックリリースおよびクリンチャー/チューブラーを除く ) ( g ) : 775