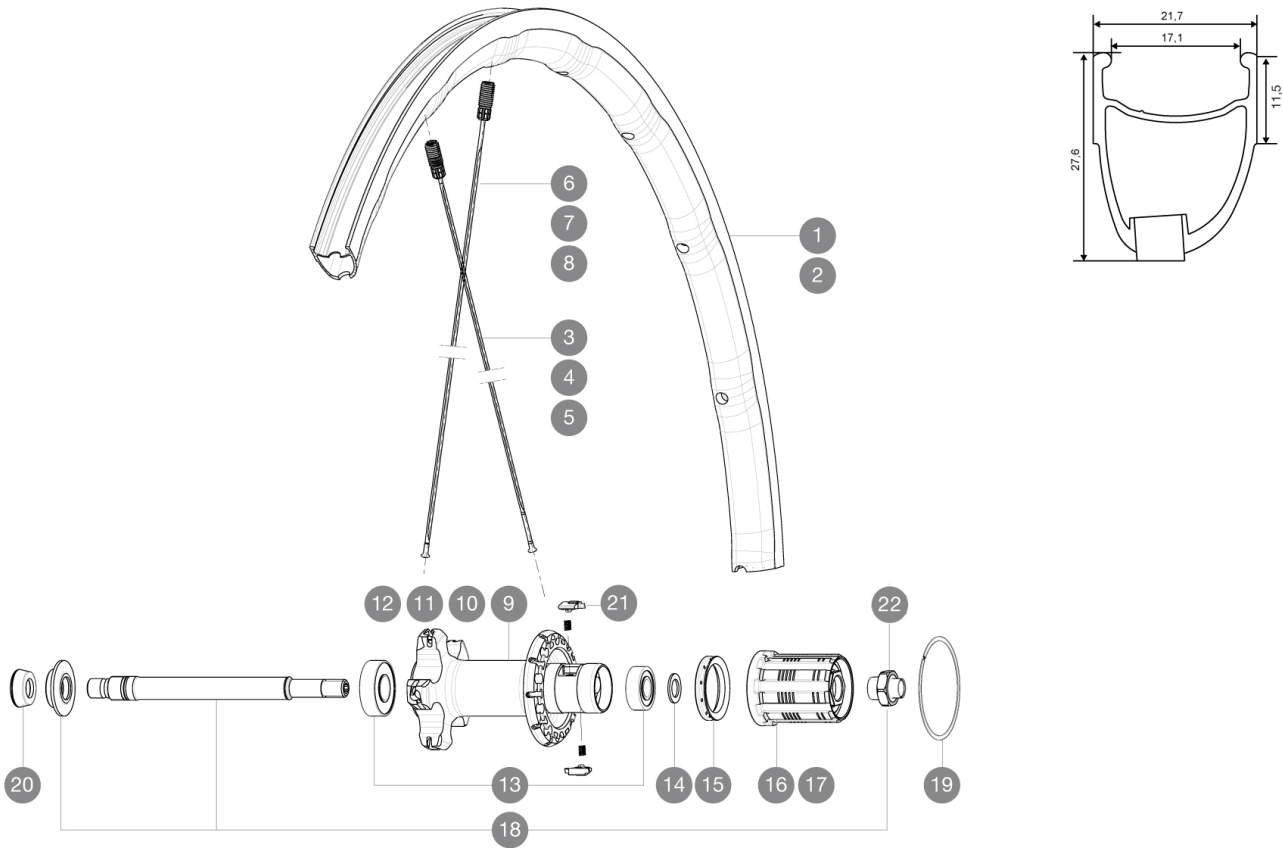


MAVIC *Ksyrium Elite*

ASTM CATEGORY 2 : road and offroad with jumps less than 15cm
 Recommended weight limit : 120kg
 Recommended tyre sizes: 25 to 52 mm
 Max. Pressure: 25mm 7.7 bars - 110 PSI

REFERENCES WHEELS

R66704	KsyriumElite16Rr White	R66702	KsyriumElite16Rr Red
R66701	KsyriumElite16Rr Black	R66703	KsyriumElite16Rr Blue

**RIMS**

VALVE HOLE Ø (MM): 6,5 :

1	LV2402300	KIT REAR RIM KSYRIUM ELITE 2016
2	LV2404800	KIT REAR RIM KSYRIUM ELITE WHITE 2016

SPOKES

3	LV2271700	KIT 10 DS KSYRIUM ELITE BLK SPK 273,5mm
4	LV2272300	KIT 10 DS KSYRIUM ELITE RED SPOKE 273,5mm
5	LV2272000	KIT 10 DS KSYRIUM ELITE BLUE SPOKE 273,5mm
6	LV2271800	KIT 10 NDS KSYRIUM ELITE BLACK SPOKE 299,5mm
7	LV2272400	KIT 10 NDS KSYRIUM ELITE RED SPOKE 299,5mm
8	LV2272100	KIT 10 NDS KSYRIUM ELITE BLUE SPOKE 299,5mm

HUB SHELLS

9	N/A	HUB BODY
10	N/A	HUB BODY
11	N/A	HUB BODY
12	N/A	HUB BODY
13	LV2540100	REAR HUB B9+6001 BEARINGS 2015
14	L30872800	SET OF 3 INTERNAL SILVER SPACERS 9mm FTS-L
15	L99500000	FTSL/FTSX FREEHUB BODY SEAL
16	L30871100	FTS-L ROAD FREEWHEEL BODY HG11 8/9 compatible
17	L30871200	FTS-L ROAD FREEWHEEL BODY ED11 8/9 compatible
18	LV2250500	KIT REAR AXLE KSYRIUM SLE/SLS/ELITE/PRO EXALITH/ALLROAD ELIT
19	LV2252200	KIT 2 REAR HUB RETENTION RINGS 48mm
20	L35117300	FT/RR FORK REST R-SYS/CC ULTIMATE > 2013/KSY PRO CARB T
21	LM4057800	FTSL PAWLS KIT (ROAD WHEELS)

22 LV2373100 KIT NUT FOR ROAD ALLOY THROUGH AXLE 9mm

MAVIC Ksyrium Elite

DELIVERED WITH

BR301 quick releases	
BR301 quick releases	
Multifonction adjustment wrench	
User guide	
Multifonction adjustment wrench	
User guide	

COMPATIBILITY

Freewheel: Shimano/Sram, convertible to Campagnolo with optional driver body	
Front axle: Quick Release only	
Rear axle: Quick Release only	

Specifications

RIMS

- **Material** : Mxxtal
- **Height** : front 24mm, rear 26 asymmetrical
- **Joint** : SUP
- **Drilling** : Fore
- **Brake track** : UB Control
- **Weight reduction** : ISM 4D
- **Valve hole diameter** : 6.5 mm
- **Material** : Mxxtal
- **Tyre** : clincher
- **ETRTO size** : 622x17C
- **Height** : front 24mm, rear 26 asymmetrical
- **Recommended tyre sizes** : 25 to 52 mm
- **Joint** : SUP
- **Drilling** : Fore
- **Brake track** : UB Control
- **Weight reduction** : ISM 4D
- **Valve hole diameter** : 6.5 mm
- **Tyre** : clincher
- **Internal width** : 17 mm
- **ETRTO size** : 622x17C

SPOKES

- **Material** : steel
- **Shape** : straight pull, bladed, front double butted
- **Nipples** : Fore integrated aluminum
- **Count** : front 18, rear 20
- **Material** : steel
- **Lacing** : front radial, rear Isopulse
- **Shape** : straight pull, bladed, front double butted
- **Nipples** : Fore integrated aluminum
- **Count** : front 18, rear 20
- **Lacing** : front radial, rear Isopulse

WHEEL HUB

- **Front and rear bodies** : aluminum
- **Axle material** : aluminum
- Adjustable sealed cartridge bearings
- **Freewheel** : FTS-L steel
- **Front and rear bodies** : aluminum
- **Axle material** : aluminum
- Adjustable sealed cartridge bearings
- **Freewheel** : FTS-L steel

VERSIONS

- **Color** : Black or Black/Red or Black/Blue or Black/White

WHEEL WEIGHTS

Wheel weight 870