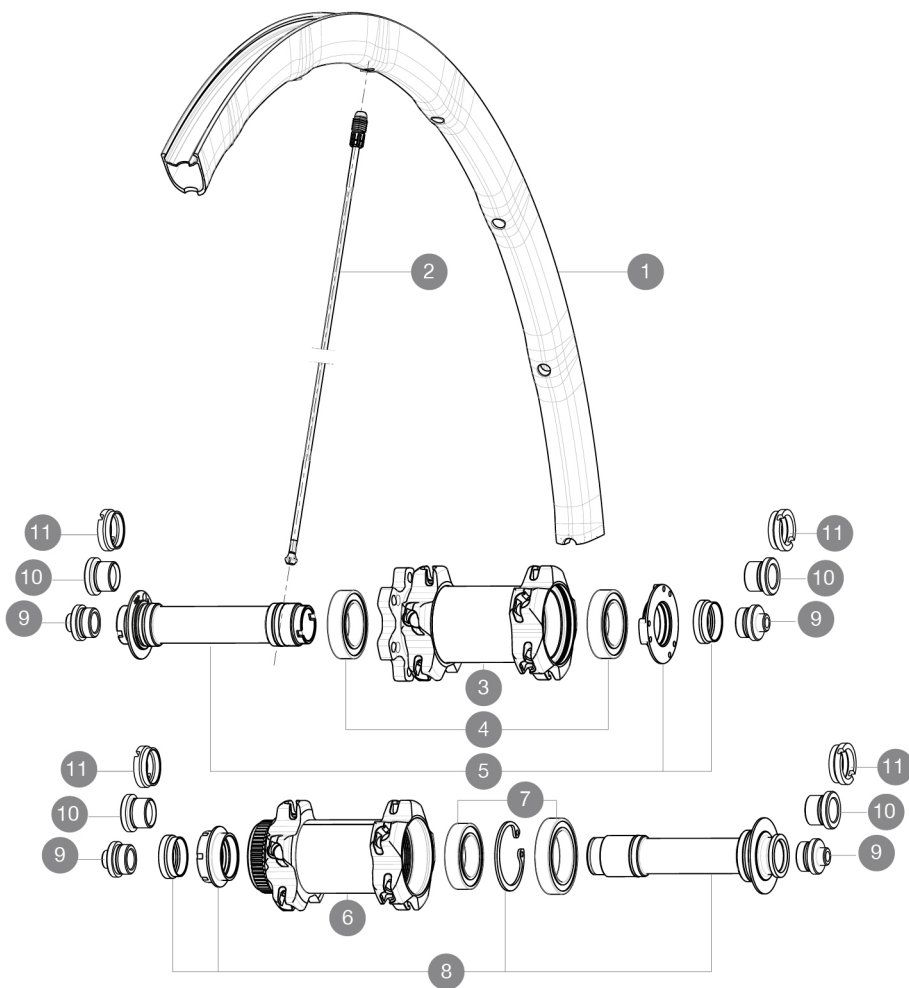


ASTM CATEGORY 2 : road and offroad with jumps less than 15cm
Recommended weight limit : 120kg

REFERENCES WHEELS

F34601 KsyProDisc16 CL Ft

F34401 KsyProDisc16 INT Ft



RIMS



VALVE HOLE Ø (MM): 6,5 :

1 LV2290500 KIT FRONT RIM KSYRIUM PRO DISC

SPOKES

2 L12029400 KIT 10 DS R-SYS SL/SLR CLINC BLK SPK 294,5mm

HUB SHELLS

| | | |
|----|-----------|--|
| 3 | N/A | HUB BODY |
| 4 | L99688500 | BEARING KIT 9/12/15 D6T HUB 20x32x7 6804 |
| 5 | LV2252300 | KIT MY16 FRONT AXLE ROAD DISC 9/12/15 INT |
| 6 | N/A | HUB BODY |
| 7 | L99688600 | BEARING KIT 9/15 DCL HUB 20x32x7 6804 + 25x37x7 6805 |
| 8 | LV2252400 | KIT MY16 FRONT AXLE ROAD DISC 9/12/15 CL |
| 9 | LB4104300 | ADAPTER Ft 9mm QR QRM+ |
| 10 | LB4104200 | ADAPTER Ft 12mm QRM+ |
| 11 | LB4104400 | ADAPTER Ft 15mm QRM+ |

MAVIC Ksyrium Pro Disc

DELIVERED WITH

| | |
|---------------------------------|--|
| BX601 quick releases | |
| Front 12 mm adapters | |
| Rear QR adapters | |
| Specific disc bolts | |
| Multifonction adjustment wrench | |
| User guide | |

Specifications

RIMS

- **Material** : Mxtral
 - **Height** : 26mm, asymmetrical
 - **Joint** : SUP
 - **Drilling** : Fore
- Disc brake specific profile
- **Weight reduction** : ISM 4D
 - **Valve hole diameter** : 6.5 mm
 - **Tyre** : clincher
 - **ETRTO size** : 622x15C
 - **Recommended tyre sizes** : 23 to 32 mm

SPOKES

- **Material** : Zicral
- **Shape** : straight pull, bladed
- **Nipples** : Fore integrated aluminum
- **Count** : 20 front and rear
- **Lacing** : front crossed 2, rear Isopulse

WHEEL HUB

- **Front body** : carbon with aluminum flanges
 - **Rear body** : aluminum
 - **Axle material** : aluminum
- Adjustable sealed cartridge bearings
- **Freewheel** : FTS-L steel
 - **Front** : Quick release, 12 thru and 15 thru compatible

WHEEL WEIGHTS

Wheel weight 680