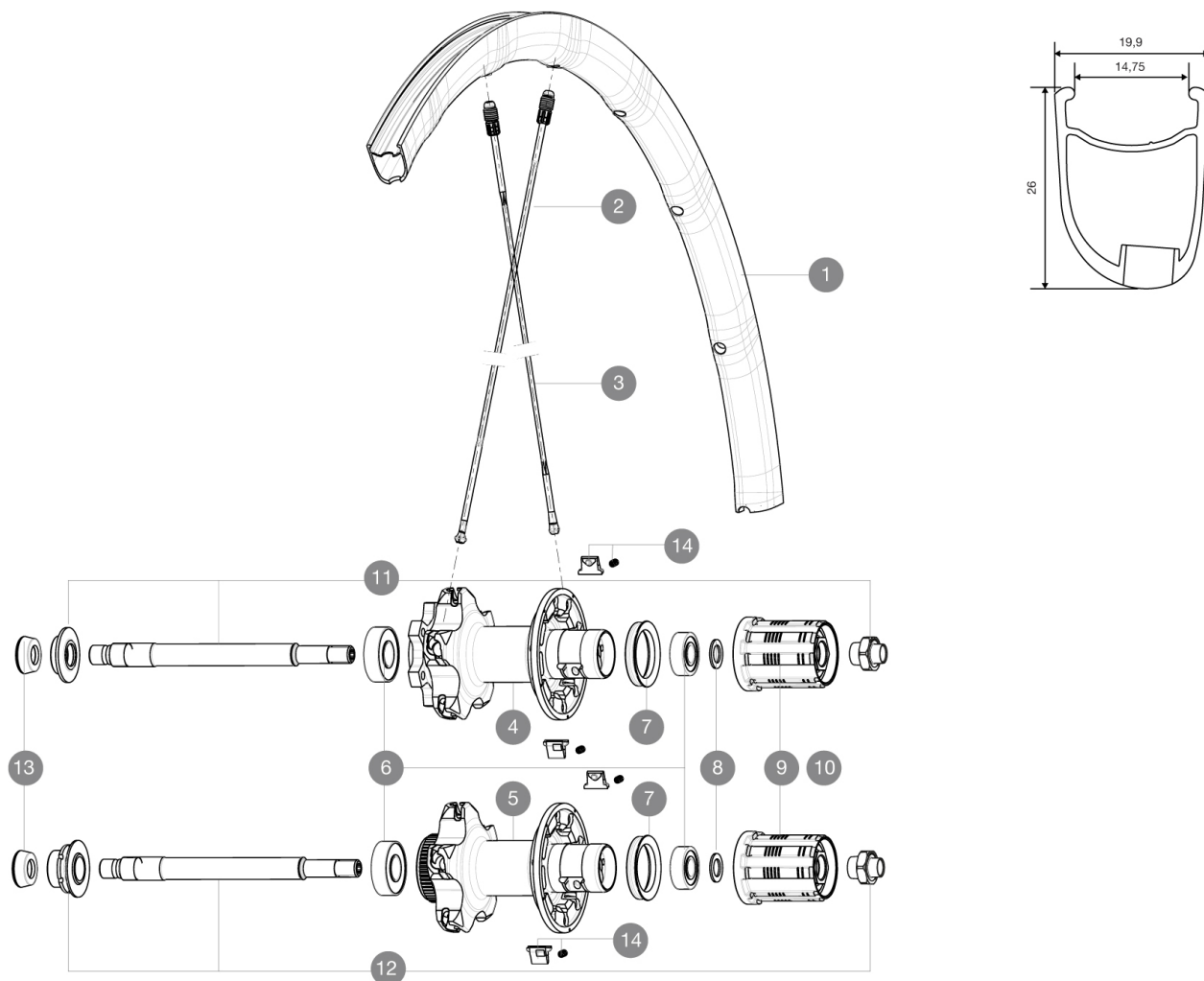


ASTM CATEGORY 2 : road and offroad with jumps less than 15cm
Recommended weight limit : 120kg

REFERENCES WHEELS

R58601 KsyProDisc16 CLRr

R58401 KsyProDisc16 INTRr



RIMS



VALVE HOLE Ø (MM): 6,5 :

1 LV2290600 KIT REAR RIM KSYRIUM PRO DISC

SPOKES

2 LV2270500 KIT 12 DS KSY PRO/PRO DISC/SL C/PRO EXA SPK 273,5mm
3 L12029400 KIT 10 DS R-SYS SL/SLR CLINC BLK SPK 294,5mm

HUB SHELLS

4	N/A	HUB BODY
5	N/A	HUB BODY
6	LV2540100	REAR HUB B9+6001 BEARINGS 2015
7	L99500000	FTSL/FTSX FREEHUB BODY SEAL
8	L30872800	SET OF 3 INTERNAL SILVER SPACERS 9mm FTS-L
9	L30871100	FTS-L ROAD FREEWHEEL BODY HG11 8/9 compatible
10	L30871200	FTS-L ROAD FREEWHEEL BODY ED11 8/9 compatible
11	LV2250600	KIT REAR AXLE KSYRIUM PRO DISC 6T
12	LV2250400	KIT REAR AXLE KSYRIUM PRO DISC CL
13	L35117300	FT/RR FORK REST R-SYS/CC ULTIMATE > 2013/KSY PRO CARB T
14	LM4057800	FTSL PAWLS KIT (ROAD WHEELS)

MAVIC Ksyrium Pro Disc

DELIVERED WITH

BX601 quick releases	
Front 12 mm adapters	
Rear QR adapters	
Specific disc bolts	
Multifonction adjustment wrench	
User guide	

Specifications

RIMS

- **Material** : Mxtral
 - **Height** : 26mm, asymmetrical
 - **Joint** : SUP
 - **Drilling** : Fore
- Disc brake specific profile
- **Weight reduction** : ISM 4D
 - **Valve hole diameter** : 6.5 mm
 - **Tyre** : clincher
 - **ETRTO size** : 622x15C
 - **Recommended tyre sizes** : 23 to 32 mm

SPOKES

- **Material** : Zicral
- **Shape** : straight pull, bladed
- **Nipples** : Fore integrated aluminum
- **Count** : 20 front and rear
- **Lacing** : front crossed 2, rear Isopulse

WHEEL HUB

- **Front body** : carbon with aluminum flanges
 - **Rear body** : aluminum
 - **Axle material** : aluminum
- Adjustable sealed cartridge bearings
- **Freewheel** : FTS-L steel
 - **Front** : Quick release, 12 thru and 15 thru compatible

WHEEL WEIGHTS

Wheel weight 855