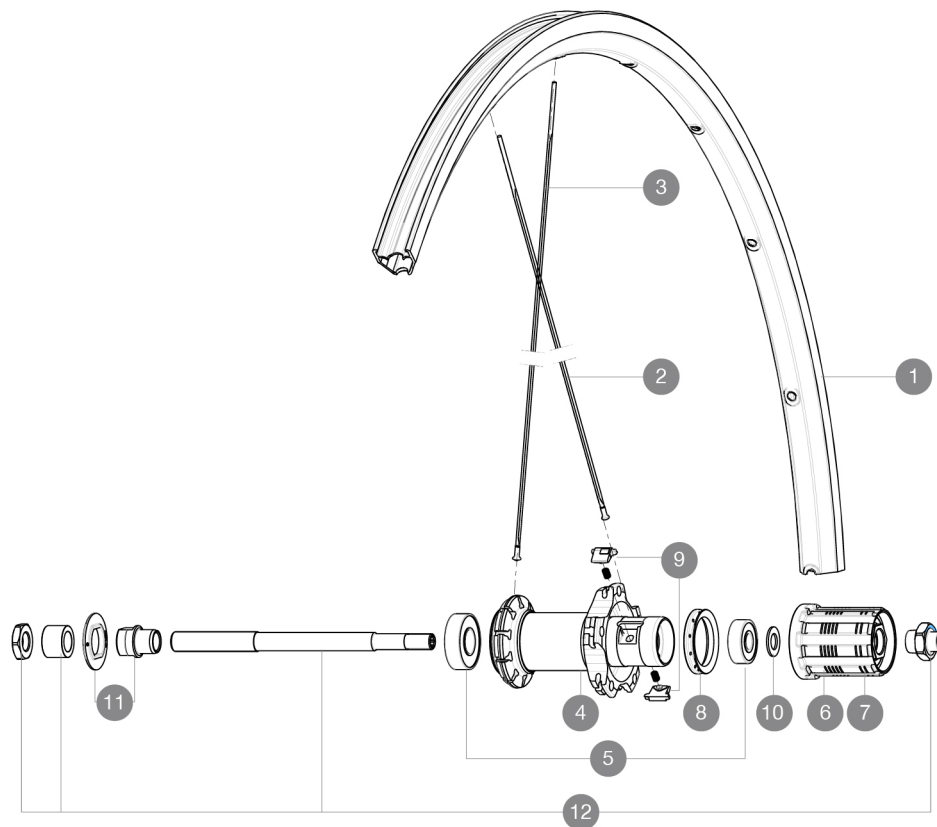


ASTM CATEGORY 2 : road and offroad with jumps less than 15cm
 Recommended weight limit : 120kg
 Recommended tyre sizes: 23 to 32 mm
 Max. Pressure: 25/28mm 7.7 bars - 110 PSI

REFERENCES WHEELS

R59101 Aksium Elite16Rr



RIMS



VALVE HOLE Ø (MM): 6,5 :

1	LV2290700	KIT FRONT/REAR RIM AKSIUM ELITE
---	-----------	---------------------------------

SPOKES

2	L10845000	KIT 10 DS AKSIUM STEEL AERO SPOKES 299mm
3	LV4160100	Kit 10 stainless spokes 285 Ft Ksyrium Equipe S/Ft & NDS Aks
3	L10844900	KIT 10 FT KSYRIUM EQ S/FT+NDS AKSIUM SPK 285mm - while stock

HUB SHELLS

4	N/A	HUB BODY
5	LM4066000	REAR HUB 608+6001 BEARINGS
6	L30871100	FTS-L ROAD FREEWHEEL BODY HG11 8/9 compatible
7	L30871200	FTS-L ROAD FREEWHEEL BODY ED11 8/9 compatible
8	L99500000	FTSL/FTSX FREEHUB BODY SEAL
9	LM4057800	FTSL PAWLS KIT (ROAD WHEELS)
10	LM4006700	INTERNAL FREEWHEEL SPACER FTSL/FTSX
11	L99603800	SHORT EXPENSIBLE BEARING SUPPORTS > 2008
12	L99603900	REAR AXLE QRM ROAD 2008

MAVIC Aksium Elite

DELIVERED WITH

BR101 quick releases	
Rim tape	
BR101 quick releases	
User guide	
Rim tape	
User guide	

Specifications

RIMS

- **Material** : S6000 Aluminum
- **Height** : 21 mm
- **Joint** : sleeved
- **Drilling** : traditional with H2 reinforcement
- **Brake track** : UB Control
- **Valve hole diameter** : 6.5 mm
- **Tyre** : clincher
- **Material** : S6000 Aluminum
- **Height** : 21 mm
- **ETRTO size** : 622x15C
- **Recommended tyre sizes** : 23 to 32 mm
- **Joint** : sleeved
- **Drilling** : traditional with H2 reinforcement
- **Brake track** : UB Control
- **Valve hole diameter** : 6.5 mm
- **Tyre** : clincher
- **ETRTO size** : 622x15C

SPOKES

- **Material** : steel
- **Shape** : straight pull, bladed
- **Nipples** : brass, ABS
- **Count** : 20 front and rear
- **Material** : steel
- **Lacing** : radial front and rear non-drive side, crossed 2 rear drive side
- **Shape** : straight pull, bladed
- **Nipples** : steel, ABS
- **Count** : 20 front and rear
- **Lacing** : radial front and rear non-drive side, crossed 2 rear drive side

WHEEL HUB

- **Front and rear bodies** : aluminum
- **Axle material** : steel
- Sealed cartridge bearings
- **Freewheel** : FTS-L steel
- **Front and rear bodies** : aluminum
- **Axle material** : steel
- Sealed cartridge bearings
- **Freewheel** : FTS-L steel

WHEEL WEIGHTS

Wheel weight 935