

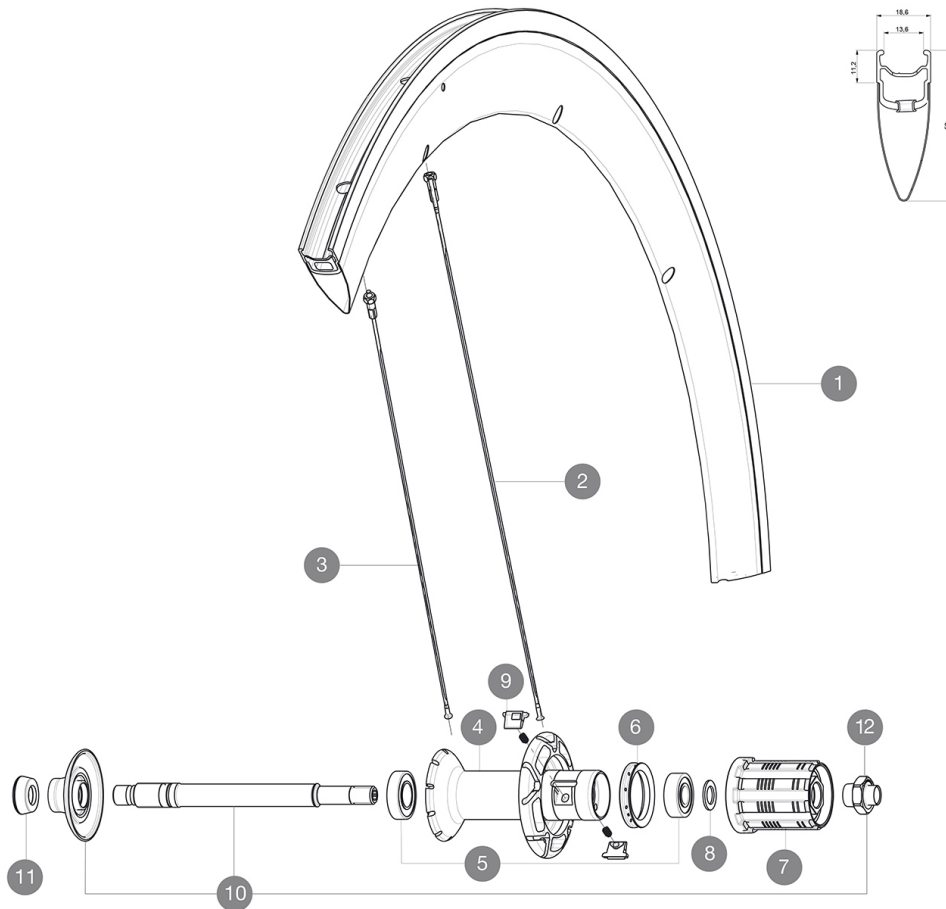
MAVIC Cosmic Pro Carbon

1
2016
REAR

ASTM CATEGORY 1 : road only
Recommended weight limit : 120kg

REFERENCES WHEELS

R58101 CosmicProCarbRrWhite R58102 CosmicProCarbRr Black



RIMS



VALVE HOLE Ø (MM): 6,5 :

1	LV4091600	KIT REAR RIM COSMIC CARBON SLS/COSMIC PRO CARBON V shaped
1	LV2402700	KIT BLACK REAR RIM COSMIC PRO CARBON - while stock last

SPOKES

2	L36644500	KIT 10 FT/NDS COSMIC CARBON SLS BLK SPK 289mm
3	L36644400	KIT 10 DS COSMIC CARBON SLS BLK SPK 287mm

HUB SHELLS

4	N/A	HUB BODY
5	L33000000	REAR HUB B9+6901 BEARINGS 2013
6	L99500000	FTSL/FTSX FREEHUB BODY SEAL
7	L30871200	FTS-L ROAD FREEWHEEL BODY ED11 8/9 compatible
7	L30871100	FTS-L ROAD FREEWHEEL BODY HG11 8/9 compatible
8	L30872800	SET OF 3 INTERNAL SILVER SPACERS 9mm FTS-L
9	LM4057800	FTSL PAWLS KIT (ROAD WHEELS)
10	LV2250300	KIT REAR AXLE AERO HUB CXR/CC40/CC SLS/CC SLE/COSMIC PRO CAR
11	L35117300	FT/RR FORK REST R-SYS/CC ULTIMATE > 2013/KSY PRO CARB T
12	LV2373100	KIT NUT FOR ROAD ALLOY THROUGH AXLE 9mm

MAVIC *Cosmic Pro Carbon***DELIVERED WITH**

BR301 quick releases	
Rim tape	
Multifonction adjustment wrench	
User guide	

Specifications**RIMS**

- **Material** : Maxtal and 12K carbon fiber
- **Height** : 52 mm
- **Joint** : SUP
- **Drilling** : traditional
- **Brake track** : UB Control
- **Weight reduction** : ISM
- **Valve hole diameter** : 6.5 mm
- **Tyre** : clincher
- **ETRTO size** : 622x13C
- **Recommended tyre sizes** : 21 to 28 mm

SPOKES

- **Material** : steel
- **Shape** : straight pull, bladed
- **Nipples** : brass, ABS
- **Count** : front 16, rear 20
- **Lacing** : radial front and rear non-drive side, crossed 2 rear drive side

WHEEL HUB

- **Front and rear bodies** : aluminum
 - **Axle material** : aluminum
- Adjustable sealed cartridge bearings
- **Freewheel** : FTS-L steel

WHEEL WEIGHTS

Wheel weight 930