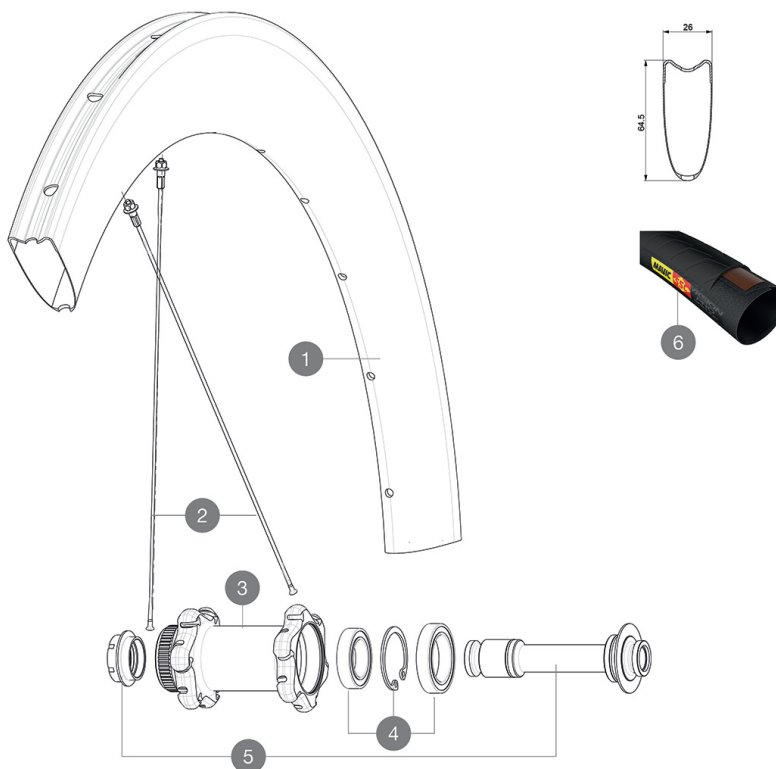


# MAVIC Comete Pro Carbon SL T Disc

ASTM CATEGORY 2 : road and offroad with jumps less than 15cm  
 Recommended weight limit : 120kg  
 Recommended tire sizes: 25 to 32 mm  
 Max. Pressure: 23mm 8.7 bars - 125 psi, 25/28mm 7.7 bars - 110 psi  
 Max. Pressure: 25mm 7.7 bars - 110 PSI

## REFERENCES WHEELS

F66601 ComProCarSiTDCLF12x100



## RIMS



&NBSP;:

|   |           |   |
|---|-----------|---|
| 1 | LV2731200 | KIT FRONT RIM COMETE PRO CARBON SL T DISC |
|---|-----------|---|

## SPOKES

|   |           |  |
|---|-----------|--|
| 2 | LV3662300 | KIT 12 FRT/NDS COMETE PRO CARB SL T/UST D & DS COSMIC PRO CA |
| 2 | LV2278600 | KIT 12 FT/NDS BUTTED AERO SPOKE 253mm - while stock last     |
| 2 | LV2278500 | KIT 1 FT 247/FT 253/DS 236 COMETE PRO CARB SL T D SPK        |

## HUB SHELLS







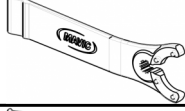
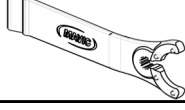
|   |           |  |
|---|-----------|--|
| 3 | N/A       | HUB BODY   |
| 4 | L99688600 | BEARING KIT 9/15 DCL HUB 20x32x7 6804 + 25x37x7 6805 |
| 5 | LV2390700 | KIT FRONT 12mm AXLE QRM+ CL                          |

## TYRES

|   |           |                        |
|---|-----------|------------------------|
| 6 | L37804400 | Yksion Pro GripTub SSC |
|---|-----------|------------------------|

# MAVIC Comete Pro Carbon SL T Disc

## DELIVERED WITH

|   |   |
|---|---|
| Front 12 mm adapters<br>(B4104201)<br>1   |    |
| Rear 12x142mm adapters for Instant Drive 360<br>(B49 896 01 for ID360 6T, B49 899 01 for ID360 CL)<br>1 |    |
| Valve extender<br>(118 952 01)<br>1   |    |
| Valve extender<br>(118 952 01)<br>1   |    |
| Specific disc bolts<br>(308 719 01)<br>Pack of 6  |    |
| Specific disc bolts<br>(308 719 01)<br>Pack of 6  |    |
| Multifunction adjustment wrench<br>(325 423 01)<br>1  |   |
| Multifunction adjustment wrench<br>(325 423 01)<br>1  |  |
| User guide  |   |
| User guide  |   |

## COMPATIBILITY

|   |  |
|---|--|
| Freewheel: Shimano/Sram or Campagnolo, convertible to XD-R with optional driver body                  |  |
| Front axle: convertible from 12mm thru axle to quick release or 15mm thru axle with optional adapters |  |
| Front axle: convertible from 12mm thru axle to quick release or 15mm thru axle with optional adapters |  |
| Rear axle: 12mm thru axle, convertible to Quick Release with optional adapters                        |  |
| Rear axle: 12mm thru axle, convertible to Quick Release with optional adapters                        |  |

## Specifications

### RIMS

- Material : 3K carbon fibers
- Material : 3K carbon fibers
- Height : 64mm
- Height : 64mm
- Drilling : traditional
- Drilling : traditional

Disc brake specific profile  
Disc brake specific profile

- Valve hole diameter : 6.5 mm
- Valve hole diameter : 6.5 mm
- Tire : tubular
- Tire : tubular
- ETRTO size : 28" tubular
- ETRTO size : 28" tubular

### SPOKES

- Material : steel
- Material : steel
- Shape : straight pull, aero, double butted
- Shape : straight pull, bladed, double butted
- Nipples : aluminum, ABS
- Nipples : aluminum, ABS
- Count : 24 front and rear
- Count : 24 front and rear
- Lacing : front crossed 2, rear Isopulse
- Lacing : front crossed 2, rear Isopulse

### WHEEL HUB

- Front and rear bodies : aluminum
- Front and rear bodies : aluminum
- Axle material : aluminum
- Axle material : aluminum
- Front bearings : adjustable sealed cartridge bearings (QRM+), Rear bearings auto adjust sealed cartridge bearings (QRM Auto)
- Sealed cartridge bearings
- Freewheel : Instant Drive 360
- Freewheel : Instant Drive 360
- Front : Quick release, 12 thru and 15 thru compatible
- Rear : 12x142 (convertible to quick release with optional adapters)

### VERSIONS

- Color : Black only
- Color : Black only
- Disc standard : Center Lock(R) only
- Disc standard : Center Lock(R) only

### WHEEL WEIGHTS

Wheel weight 765