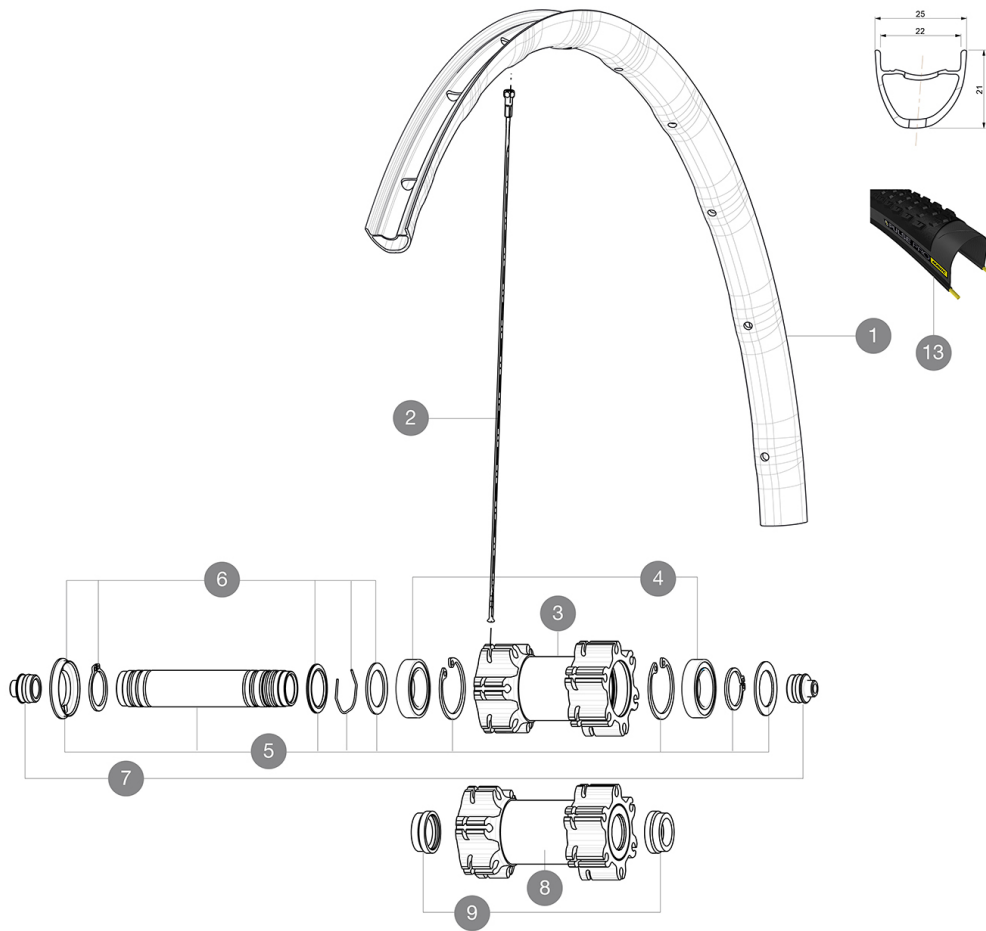


MAVIC Crossmax Elite 29

ASTM CATEGORY 3 : offroad with jumps less than 61cm
Recommended weight limit : 120kg
Recommended tire sizes: 28 mm to 62 mm (1.1" to 2.5")

REFERENCES WHEELS

F55101	XmxEl29FBlk	F55102	XmxEl29FtRed
--------	-------------	--------	--------------



RIMS



Ø VALVE HOLE (MM): 6,5 :

1	LV2950100	KIT FT/RR RIM CROSSMAX EL 29" 22mm BLK TSS
1	LV2970100	KIT FT/RR RIM CROSSMAX EL 29" 22mm RED TSS
	LV2620100	UST RIM TAPE 25mm (for 21-24mm wide rim)

TYRES

13	L39243200	Pulse Pro 29
13	L39243200	Pulse Pro 29

SPOKES







2	V2381401	KIT 12 DS XRIDE UST/FT XMAX EL/XA EL SPK 29" 296mm
---	----------	--

HUB SHELLS

3	N/A	HUB BODY
3	N/A	HUB BODY
4	L99688500	BEARING KIT 9/12/15 D6T HUB 20x32x7 6804
5	LV2371100	KIT FRONT QRM AXLE 100mm/BOOST 110mm
5	LV2370100	KIT FRONT AXLE 15MM CROSSONE-/RIDE-/ROC - while stock last
6	LV2370300	KIT FRONT AUTO ADJUSTING PLAY 15mm AXLE
7	LB4104400	ADAPTER Ft 15mm QRM+
8	N/A	HUB BODY
8	N/A	HUB BODY
9	LV2371300	YELL FT AXLE SUPPORT BOOST 110mm SELF ADJUST
10	N/A	HUB BODY
11	LM4077100	BEARING KIT FOR LEFTY 50 & 60 HUB
12	L36709300	ASSEMBLY KIT FOR LEFTY SUPERMAX WHEELS

MAVIC Crossmax Elite 29

DELIVERED WITH

1 bottle of Mavic Sealant (355 466 01) 1	
BR101 quick releases (M40350 firt, M40351 rear road, M40352 rear MTB) 1	
Front QR adapters (996 941 01 for MTB or B41 043 01 for road) 1	
Rear 12x142mm adapters for ITS4 and TS2 (308 593 01 for ITS4, 329 650 01 for TS2) 1	
UST valve and accessories (129 838 01)	
UST valve and accessories (129 838 01)	
Tubeless rim tape	
Tubeless rim tape	

COMPATIBILITY

Freewheel: Shimano/Sram or XD	
Freewheel: Shimano/Sram, convertible to XD with optional driver body	
Front axle: convertible from 15mm thru axle to Quick Release with included adapters	
Front axle: convertible from 15mm thru axle to Quick Release with included adapters	
Rear axle: 12mm thru axle, convertible to Quick Release with optional adapters	

Specifications

RIMS

- **Material** : Mxstal
 - **Material** : Mxstal
 - **Joint** : SUP
 - **Joint** : SUP
 - **Drilling** : traditional
 - **Drilling** : traditional
 - **Weight reduction** : ISM 4D
 - **Weight reduction** : ISM 4D
 - **Valve hole diameter** : 6.5 mm
 - **Valve hole diameter** : 6.5 mm
 - **Tire** : UST Tubeless and tubetype
 - **Tire** : UST Tubeless and tubetype
 - **Internal width** : 22 mm
 - **Internal width** : 22 mm
 - **ETRTO size 27.5"** : 584x22ss
 - **ETRTO size 27.5"** : 584x22ss
 - **ETRTO size 29"** : 622x22ss
 - **ETRTO size 29"** : 622x22ss
- Hookless profile
Hookless profile
Use with Mavic Tubeless Tape
Use with Mavic Tubeless Tape

SPOKES

- **Material** : steel
- **Material** : steel
- **Shape** : straight pull, bladed, double butted
- **Shape** : straight pull, bladed, double butted
- **Count** : 24 front and rear
- **Count** : 24 front and rear
- **Lacing** : front and rear crossed 2
- **Lacing** : front and rear crossed 2

WHEEL HUB

- **Front and rear bodies** : aluminum
 - **Front and rear bodies** : aluminum
 - **Axle material** : aluminum
 - **Axle material** : aluminum
- Sealed cartridge bearings
Sealed cartridge bearings
- **Freewheel** : ITS-4 alloy
 - **Freewheel** : ITS-4 alloy

VERSIONS

- **Color** : Black or Black/Red
 - **Color** : Black or Black/Red
 - **Disc standard** : 6 Bolts only
 - **Disc standard** : 6 Bolts only
 - **Hub width** : Boost (front 110, rear 148) or Non-Boost (front 100, rear 135/142)
 - **Hub width** : Boost (front 110, rear 148) or Non-Boost (front 100, rear 135/142)
- Lefty Supermax
Lefty Supermax

WHEEL WEIGHTS

- **Wheel weight**
- **Weight Front 27.5"**: 750
- **Weight Front 29"**: 785