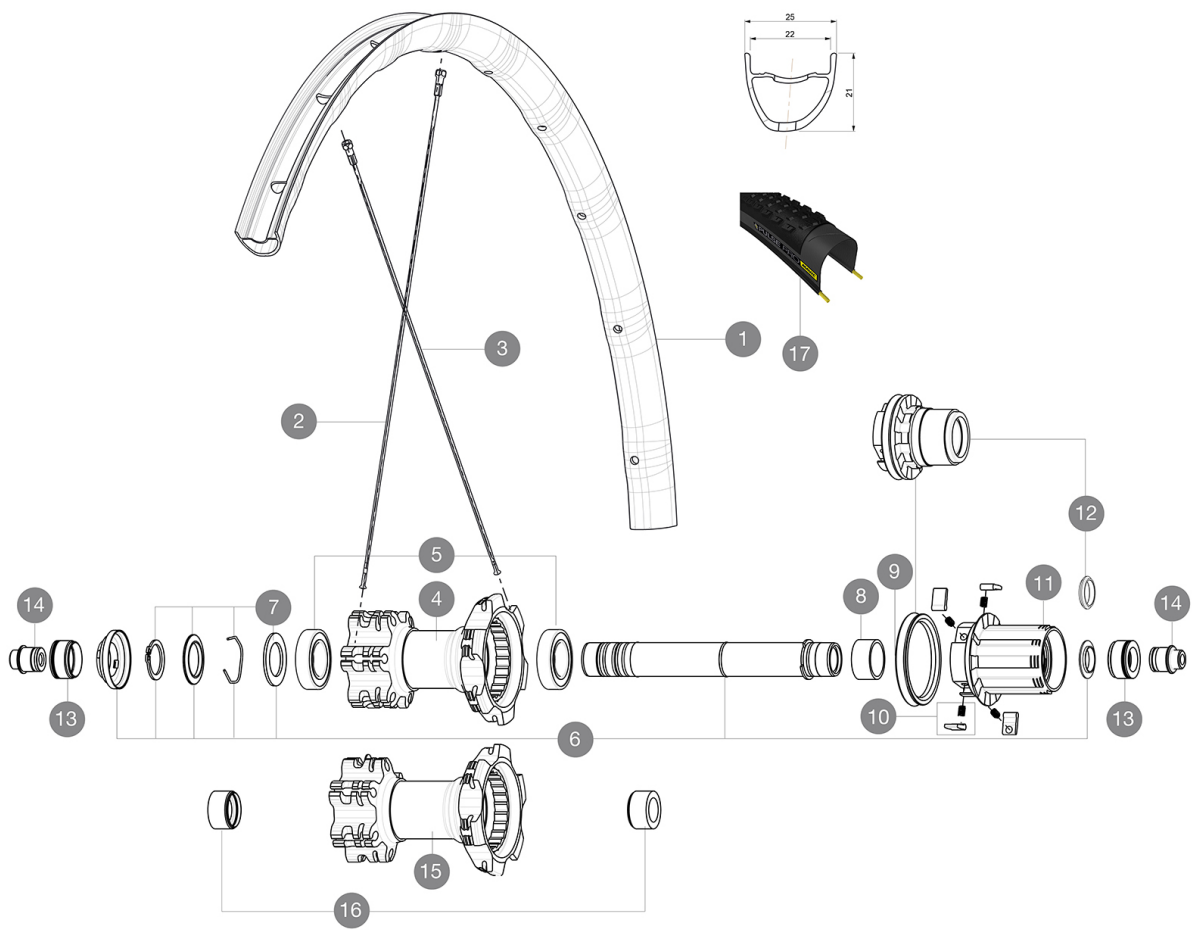




# Crossmax Elite 29

参照ホイール

ASTM CATEGORY 3 : offroad with jumps less than 61cm  
For a longer longevity of the wheel, Mavic recommends that the total weight supported by the wheels don't exceed 120kg, bike included  
Recommended tyre sizes: 28 mm to 62 mm (1.1" to 2.5")



## RIMS



バルブ穴径 (MM) : 6,5 :

1	LV2950100	KIT FRONT/REAR RIM CROSSMAX ELITE 29" 22mm BLACK
1	LV2970100	KIT FRONT/REAR RIM CROSSMAX ELITE 29" 22mm RED TUBELESS
	LV2620100	SET RIM TAPE 25mm (for 21-24mm wide rim)

16	LV2371400	YELLOW AXLE SUPPORT REAR BOOST 148mm FOR SELF ADJUSTING AXLE
----	-----------	--------------------------------------------------------------

## TYRES

17	L39243200	Pulse Pro 29" 2.25
17	L39243200	Pulse Pro 29" 2.1

## SPOKES

2	LV2382300	12 REAR DRIVE SIDE SPOKES 297mm CROSSRIDE
3	L36689600	"12 SPOKES DRIVE SIDE CROSSROC 29"" 293mm"







## HUB SHELLS

4	N/A	HUB BODY
4	N/A	HUB BODY
5	M40076	HUB BEARINGS 17x30x7 6903 x 2
6	LV2371200	KIT REAR QRM AXLE 135-142mm/BOOST 148mm
7	LV2370400	REAR AUTO ADJUST.PLAY KIT 12MM AXLE
8	L35124500	SET OF 3 REAR AXLE/FREEWHEEL BODY SPACERS
9	L99610700	ITS4 SEAL
10	L99610600	ITS4 PAWLS KIT
11	L35126000	ITS-4 FREEWHEEL BODY + SEAL 2013 (WITHOUT PAWLS)
12	L35684100	ITS-4 FREEWHEEL BODY XD +SEAL 2013 (WITHOUT PAWLS)
13	L30872200	FORK REST ITS-4 135mm REAR AXLE > 2012
14	L30873100	2 REAR REDUCERS 12/9,5mm 2012 ITS4 HUB
15	N/A	HUB BODY
15	N/A	HUB BODY



# Crossmax Elite 29

## 付属品

1 bottle of Mavic Sealant (355 466 01) 1	
BR101 quick releases (M40350 frt, M40351 rear road, M40352 rear MTB) 1	
Front QR adapters (996 941 01 for MTB or B41 043 01 for road) 1	
Rear 12x142mm adapters for ITS4 and TS2 (308 593 01 for ITS4, 329 650 01 for TS2) 1	
UST valve and accessories (129 838 01)	
UST valve and accessories (129 838 01)	
Tubeless rim tape	
Tubeless rim tape	

## COMPATIBILITY

Freewheel: Shimano/Sram or XD	
Freewheel: Shimano/Sram, convertible to XD with optional driver body	
Front axle: convertible from 15mm thru axle to Quick Release with included adapters	
Front axle: convertible from 15mm thru axle to Quick Release with included adapters	
Rear axle: 12mm thru axle, convertible to Quick Release with optional adapters	

## Specifications

### リム

- Material : Maxtal
- Material : Maxtal
- Joint : SUP
- Joint : SUP
- Drilling : traditional
- Drilling : traditional
- Weight reduction : ISM 4D
- Weight reduction : ISM 4D
- Valve hole diameter : 6.5 mm
- Valve hole diameter : 6.5 mm
- Tyre : UST Tubeless and tubetype
- Tyre : UST Tubeless and tubetype
- Internal width : 22 mm
- Internal width : 22 mm
- ETRTO size 27.5" : 584x22ss
- ETRTO size 27.5" : 584x22ss
- ETRTO size 29" : 622x22ss
- ETRTO size 29" : 622x22ss
- Hookless profile
- Hookless profile
- Use with Mavic Tubeless Tape
- Use with Mavic Tubeless Tape

### スポーク

- Material : steel
- Material : steel
- Shape : straight pull, bladed, double butted
- Shape : straight pull, bladed, double butted
- Count : 24 front and rear
- Count : 24 front and rear
- Lacing : front and rear crossed 2
- Lacing : front and rear crossed 2

### ホイールハブ

- Front and rear bodies : aluminum
- Front and rear bodies : aluminum
- Axle material : aluminum
- Axle material : aluminum
- Sealed cartridge bearings
- Sealed cartridge bearings
- Freewheel : ITS-4 alloy
- Freewheel : ITS-4 alloy

### VERSIONS

- Color : Black or Black/Red
- Color : Black or Black/Red
- Disc standard : 6 Bolts only
- Disc standard : 6 Bolts only
- Hub width : Boost (front 110, rear 148) or Non-Boost (front 100, rear 135/142)
- Hub width : Boost (front 110, rear 148) or Non-Boost (front 100, rear 135/142)
- Lefty Supermax
- Lefty Supermax

### ホイールの重み

- ホイール重量 (クイックリリースおよびクリンチャー/チューブラーを除く) (g) :
- Weight Rear 27.5": 885
- Weight Rear 29": 930