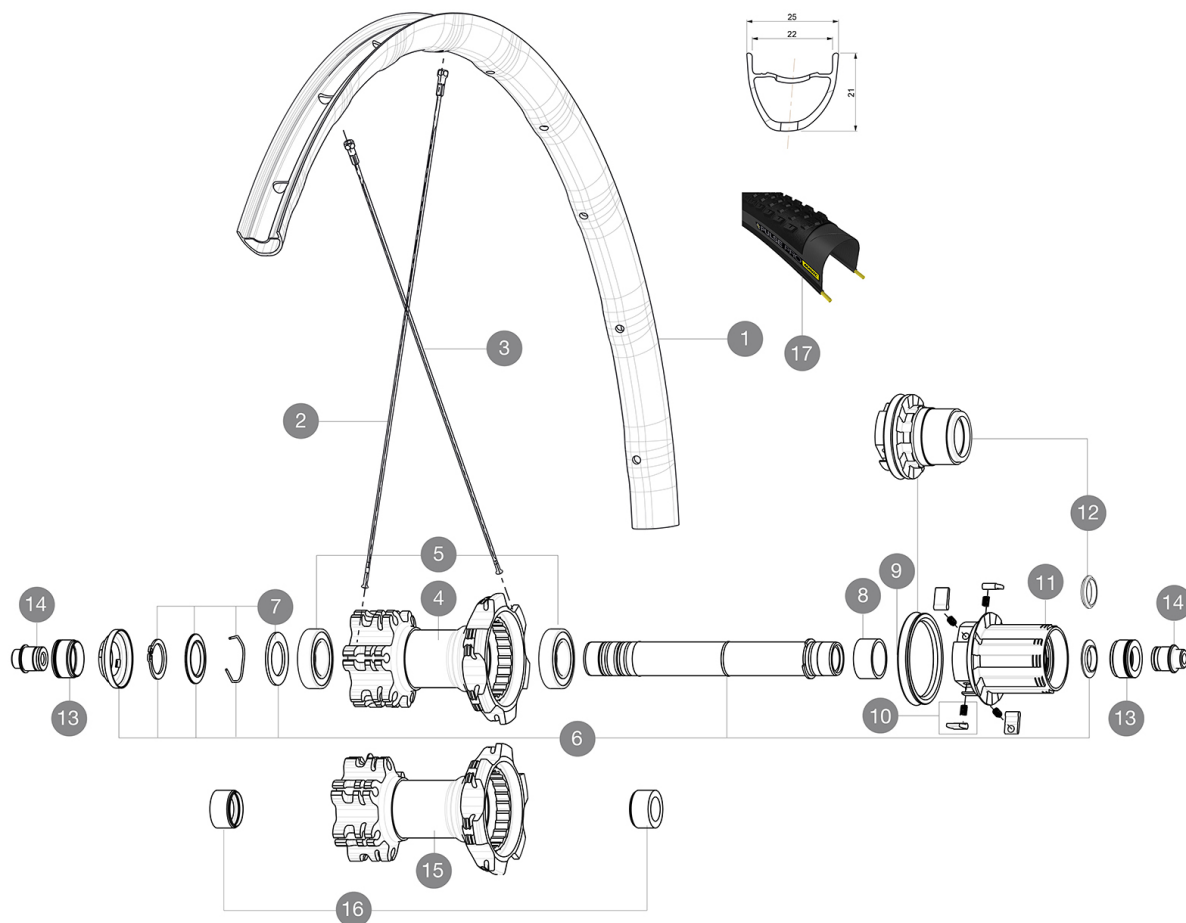


ASTM CATEGORY 3 : offroad with jumps less than 61cm
Recommended weight limit : 120kg
Recommended tire sizes: 28 mm to 62 mm (1.1" to 2.5")

REFERENCES WHEELS



RIMS



Ø VALVE HOLE (MM): 6,5 :

| | | |
|---|-----------|--|
| 1 | LV2950100 | KIT FT/RR RIM CROSSMAX EL 29" 22mm BLK TSS |
| 1 | LV2970100 | KIT FT/RR RIM CROSSMAX EL 29" 22mm RED TSS |
| | LV2620100 | UST RIM TAPE 25mm (for 21-24mm wide rim) |

SPOKES

| | | |
|---|-----------|--|
| 2 | LV2382300 | KIT 12 DS XRIDE + FTSX/NDS XMAX EL/XA EL 29" SPK 297mm |
| 3 | L36689600 | "KIT 12 DS CROSSROC/XRIDE UST/XMAX ELITE/XA ELITE 29"" SPK 2 |

HUB SHELLS







| | | |
|----|-----------|--|
| 4 | N/A | HUB BODY |
| 4 | N/A | HUB BODY |
| 5 | M40076 | HUB BEARINGS 17x30x7 6903 x 2 |
| 6 | LV2371200 | KIT REAR QRM AXLE 135-142mm/BOOST 148mm |
| 7 | LV2370400 | KIT REAR AUTO ADJUSTING PLAY 12mm AXLE |
| 8 | L35124500 | SET OF 3 REAR AXLE/FREEWHEEL BODY SPACERS MTB L1 |
| 9 | L99610700 | ITS-4 FREEWHEEL SEAL |
| 10 | L99610600 | PAWLS KIT FOR ITS-4 (OR TS-2) |
| 11 | L35126000 | ITS-4 FREEWHEEL BODY + SEAL 2013 (NO PAWLS) |
| 12 | L35684100 | FREEHUB BODY XD TS2/ITS-4 |
| 13 | L30872200 | FRAME SUPPORT ITS-4 135mm REAR AXLE > 2012 |
| 14 | L30873100 | 2 REAR REDUCERS 12/9,5mm 2012 ITS4 HUB |
| 15 | N/A | HUB BODY |
| 15 | N/A | HUB BODY |
| 16 | LV2371400 | YELL RR AXLE SUPPORT BOOST 148mm SELF ADJUST |

TYRES

| | | |
|----|-----------|--------------|
| 17 | L39243200 | Pulse Pro 29 |
| 17 | L39243200 | Pulse Pro 29 |

MAVIC Crossmax Elite 29

DELIVERED WITH

| | |
|---|---|
| 1 bottle of Mavic Sealant (355 466 01) 1 |  |
| BR101 quick releases (M40350 firt, M40351 rear road, M40352 rear MTB) 1 |  |
| Front QR adapters (996 941 01 for MTB or B41 043 01 for road) 1 |  |
| Rear 12x142mm adapters for ITS4 and TS2 (308 593 01 for ITS4, 329 650 01 for TS2) 1 |  |
| UST valve and accessories (129 838 01) |  |
| UST valve and accessories (129 838 01) |  |
| Tubeless rim tape | |
| Tubeless rim tape | |

COMPATIBILITY

| | |
|---|--|
| Freewheel: Shimano/Sram or XD | |
| Freewheel: Shimano/Sram, convertible to XD with optional driver body | |
| Front axle: convertible from 15mm thru axle to Quick Release with included adapters | |
| Front axle: convertible from 15mm thru axle to Quick Release with included adapters | |
| Rear axle: 12mm thru axle, convertible to Quick Release with optional adapters | |

Specifications

RIMS

- **Material** : Mxstal
 - **Material** : Mxstal
 - **Joint** : SUP
 - **Joint** : SUP
 - **Drilling** : traditional
 - **Drilling** : traditional
 - **Weight reduction** : ISM 4D
 - **Weight reduction** : ISM 4D
 - **Valve hole diameter** : 6.5 mm
 - **Valve hole diameter** : 6.5 mm
 - **Tire** : UST Tubeless and tubetype
 - **Tire** : UST Tubeless and tubetype
 - **Internal width** : 22 mm
 - **Internal width** : 22 mm
 - **ETRTO size 27.5"** : 584x22ss
 - **ETRTO size 27.5"** : 584x22ss
 - **ETRTO size 29"** : 622x22ss
 - **ETRTO size 29"** : 622x22ss
- Hookless profile
Hookless profile
Use with Mavic Tubeless Tape
Use with Mavic Tubeless Tape

SPOKES

- **Material** : steel
- **Material** : steel
- **Shape** : straight pull, bladed, double butted
- **Shape** : straight pull, bladed, double butted
- **Count** : 24 front and rear
- **Count** : 24 front and rear
- **Lacing** : front and rear crossed 2
- **Lacing** : front and rear crossed 2

WHEEL HUB

- **Front and rear bodies** : aluminum
 - **Front and rear bodies** : aluminum
 - **Axle material** : aluminum
 - **Axle material** : aluminum
- Sealed cartridge bearings
Sealed cartridge bearings
- **Freewheel** : ITS-4 alloy
 - **Freewheel** : ITS-4 alloy

VERSIONS

- **Color** : Black or Black/Red
 - **Color** : Black or Black/Red
 - **Disc standard** : 6 Bolts only
 - **Disc standard** : 6 Bolts only
 - **Hub width** : Boost (front 110, rear 148) or Non-Boost (front 100, rear 135/142)
 - **Hub width** : Boost (front 110, rear 148) or Non-Boost (front 100, rear 135/142)
- Lefty Supermax
Lefty Supermax

WHEEL WEIGHTS

- Wheel weight
- Weight Rear 27.5": 885
- Weight Rear 29": 930