

# MAVIC Cosmic Pro Carbon SL T Disc

For a longer longevity of the wheel, Mavic recommends that the total weight supported by the wheels don't exceed 120kg, bike included

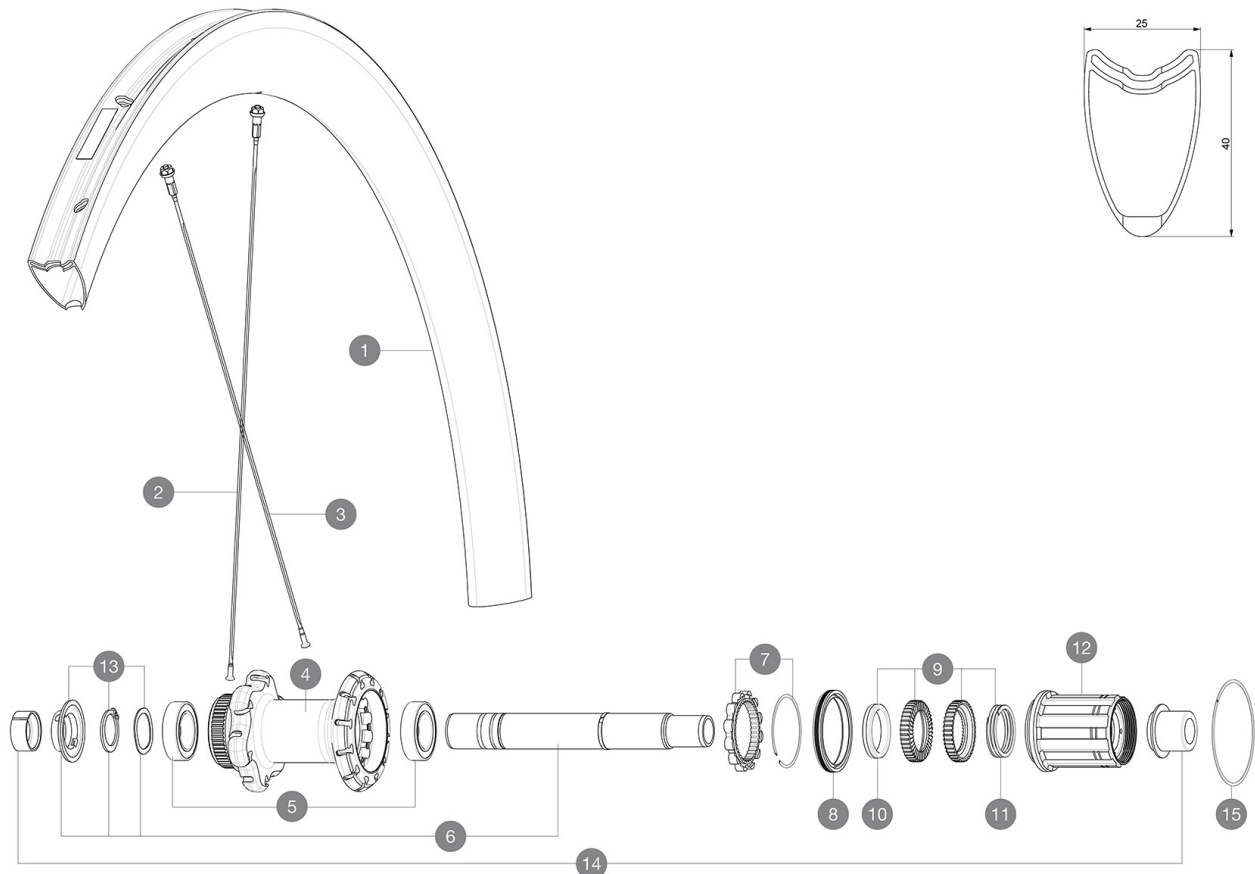
Recommended tyre sizes: 25 to 32 mm

Max. Pressure: see indication on wheel and tyre. If they differ, use the lower of the 2

Max. Pressure: 23mm 8.7 bars - 125 psi, 25/28mm 7.7 bars - 110 psi

## REFERENCES WHEELS

R30091 CosProCarb SL T DCL 19 Rr



## RIMS



&NBSP;:

1 LV2738300 KIT REAR RIM COSMIC PRO CARBON SL T Disc 19

## SPOKES

2 LV3667200 KIT 2 FRT/NDS 279 STAMPED BUTTED AERO STAINLESS SPOKE COSMIC  
 2 LV3667300 KIT 12 FRT BUTTED AERO STAINLESS SPOKE 279 + alu nipple + wa  
 3 LV3663900 KIT 12 NON DRIVE SIDE BUTTED AERO STAINLESS SPOKE 261 + alu

## HUB SHELLS

4 N/A HUB BODY  
 5 LV2560400 KIT 2 BEARINGS 17x28x7 + WAVED WASHER + CLIP  
 6 LV2373400 KIT ID360 135/142 DCL L1 AXLE WITH CLIP  
 7 LV2252700 KIT ID360 INSERT SHAPED EAR LOBE > 2017  
 8 LV2251600 KIT ID360 SEAL + GREASE  
 9 LV2251700 KIT ID360 2 RATCHETS + SPRING + GREASE  
 10 LV2500500 KIT ID360 3 PADS NOISE REDUCING  
 11 LV2251800 KIT 3 ID360 ROAD SPRINGS  
 12 LV3430100 HG11 Freewheel Body ID360  
 13 LV2560500 KIT ADJUST. SYSTEM QRM AUTO ID360 for 17x28x7 bearing  
 14 LV2510700 ID360V2RrAxleAdapt12x142/148  
 15 LV2252200 KIT 2 REAR HUB RETENTION RINGS 48mm

# MAVIC Cosmic Pro Carbon SL T Disc

## DELIVERED WITH

Front QR adapters (996 941 01 for MTB or B41 043 01 for road)	
Front QR adapters (996 941 01 for MTB or B41 043 01 for road)	
Rear QR adapters for Instant Drive 360 (B49 894 01)	
Rear QR adapters for Instant Drive 360 (B49 894 01)	
User guide	
User guide	

## COMPATIBILITY

Freewheel: Shimano/Sram, convertible to Campagnolo and XD-R with optional driver bodies	
Freewheel: Shimano/Sram, convertible to Campagnolo and XD-R with optional driver bodies	
Front axle: 12mm thru axle, easily convertible to quick release with included adapters. Convertible to 15mm with complete axle replacement	
Front axle: 12mm thru axle, easily convertible to quick release with included adapters. Convertible to 15mm with complete axle replacement	
Rear axle: 12mm thru axle, convertible to Quick Release with included adapters	
Rear axle: 12mm thru axle, convertible to Quick Release with included adapters	

## Specifications

### RIMS

- **Material** : 3K carbon fibers
  - **Material** : 3K carbon fibers
  - **Height** : 40 mm
  - **Height** : 40 mm
  - **Drilling** : traditional
  - **Drilling** : traditional
- Disc brake specific profile  
Disc brake specific profile
- **Valve hole diameter** : 6.5 mm
  - **Valve hole diameter** : 6.5 mm
  - **Tyre** : tubular
  - **Tyre** : tubular
  - **ETRTO size** : 28" tubular
  - **ETRTO size** : 28" tubular

### SPOKES

- **Material** : steel
- **Material** : steel
- **Shape** : straight pull, aero, double butted
- **Shape** : straight pull, aero, double butted
- **Nipples** : aluminum, ABS
- **Nipples** : aluminum, ABS
- **Count** : 24 front and rear
- **Count** : 24 front and rear
- **Lacing** : front crossed 2, rear Isopulse
- **Lacing** : front crossed 2, rear Isopulse

### WHEEL HUB

- **Front and rear bodies** : aluminum
  - **Front and rear bodies** : aluminum
  - **Axle material** : aluminum
  - **Axle material** : aluminum
- Auto adjust sealed cartridge bearings (QRM Auto), front and rear  
Auto adjust sealed cartridge bearings (QRM Auto), front and rear
- **Freewheel** : Instant Drive 360
  - **Freewheel** : Instant Drive 360
  - **Front** : Quick release, 12x100 and 15x100 through axle compatible
  - **Front** : Quick release, 12x100 and 15x100 through axle compatible
  - **Rear** : Quick Release, 12x142 and 12x135 compatible
  - **Rear** : Quick Release, 12x142 and 12x135 compatible

### VERSIONS

- **Color** : Black only
- **Disc standard** : Center Lock(R) only
- **Disc standard** : Center Lock(R) only

### WHEEL WEIGHTS

810