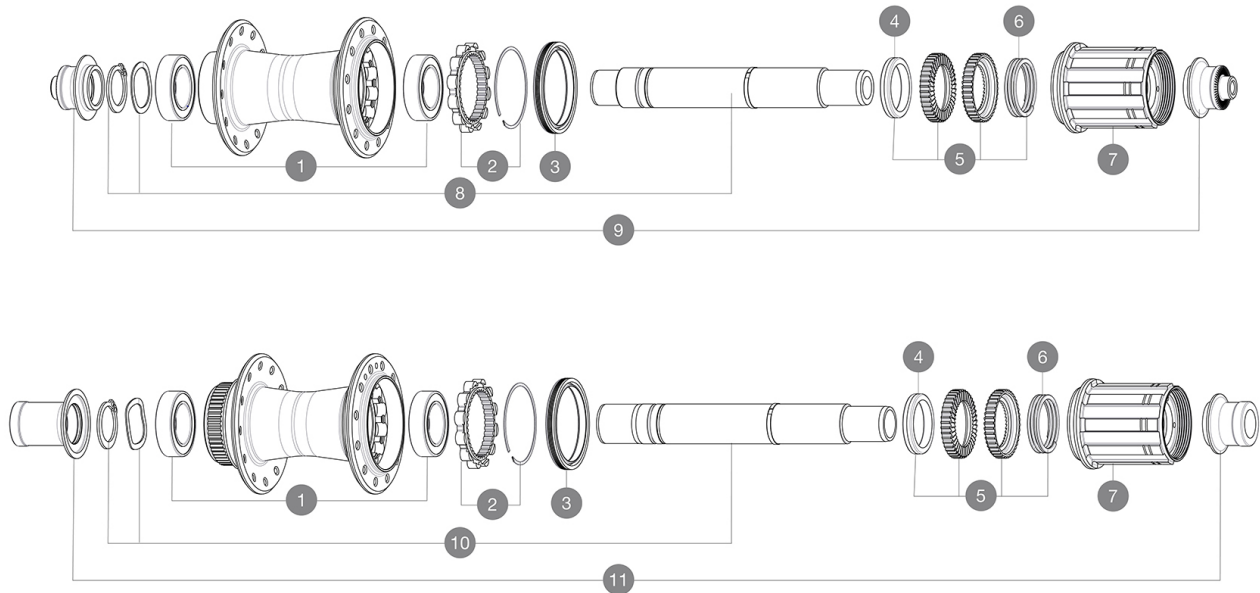


REFERENCES WHEELS



HUB SHELLS

1	LV2560400	KIT 2 BEARINGS 17x28x7 + WAVED WASHER + CLIP
2	LV2252700	KIT ID360 INSERT SHAPED EAR LOBE > 2017
3	LV2251600	KIT ID360 SEAL + GREASE
4	LV2500500	KIT ID360 3 PADS NOISE REDUCING
5	LV2251700	KIT ID360 2 RATCHETS + SPRING + GREASE
6	LV2251800	KIT 3 ID360 ROAD SPRINGS
7	LV3430100	HG11 Freewheel Body ID360
8	LV2252800	KIT ID360 UB REAR AXLE W/CLIP/WAVED WASHER
9	LV2253100	KIT REAR AXLE ADAPTOR QUICK RELEASE ID360
10	LV2373400	KIT ID360 135/142 DCL L1 AXLE WITH CLIP
11	LV3811000	KIT ROAD ID360 RR CL ENDCAP (12MM)

MAVIC Road Hub

DELIVERED WITH

BR601 quick releases (rim brake version only)	
BR601 quick releases (rim brake version only)	
Front QR adapters (996 941 01 for MTB or B41 043 01 for road)	
Front QR adapters (996 941 01 for MTB or B41 043 01 for road)	
Rear QR adapters for Instant Drive 360 (B49 894 01)	
Rear QR adapters for Instant Drive 360 (B49 894 01)	

COMPATIBILITY

Freewheel: Shimano/Sram, convertible to Campagnolo and XD-R with optional driver bodies	
Freewheel: Shimano/Sram, convertible to Campagnolo and XD-R with optional driver bodies	
Front axle: 12x100 thru axle, easily convertible to quick release with included adapters. Not compatible with 15mm through axles.	
Front axle: 12x100 thru axle, easily convertible to quick release with included adapters. Not compatible with 15mm through axles.	
Rear axle: 12mm thru axle, convertible to Quick Release with included adapters	
Rear axle: 12mm thru axle, convertible to Quick Release with included adapters	
Maximum spoke width: 2,4mm	
Maximum spoke width: 2,4mm	

Specifications

WHEEL HUB

- **Front and rear bodies** : aluminum
 - **Front and rear bodies** : aluminum
 - **Axle material** : aluminum
 - **Axle material** : aluminum
- Auto adjust sealed cartridge bearings (QRM Auto), front and rear
- **Freewheel** : Instant Drive 360
 - **Front** : Quick release and 12x100 through axle compatible
 - **Front** : Quick release and 12x100 through axle compatible
 - **Rear** : Quick Release, 12x142 and 12x135 compatible
 - **Rear** : Quick Release, 12x142 and 12x135 compatible
- Instant Drive 360
QRM Auto

VERSIONS

- **Disc standard** : Center Lock(R) only
- **Disc standard** : Center Lock(R) only
- **Front for rim brake** : 20 holes
- **Front for disc brake** : 24 & 28 holes
- **Front for disc brake** : 24, 28 and 32 holes
- **Rear for disc brake** : 24, 28 and 32 holes
- **Front for rim brake** : 20, 24 and 28 holes
- **Rear for rim brake** : 24 holes
- **Rear for rim brake** : 24, 28 and 32 holes
- **Rear for disc brake** : 24 & 28 holes

WHEEL WEIGHTS