

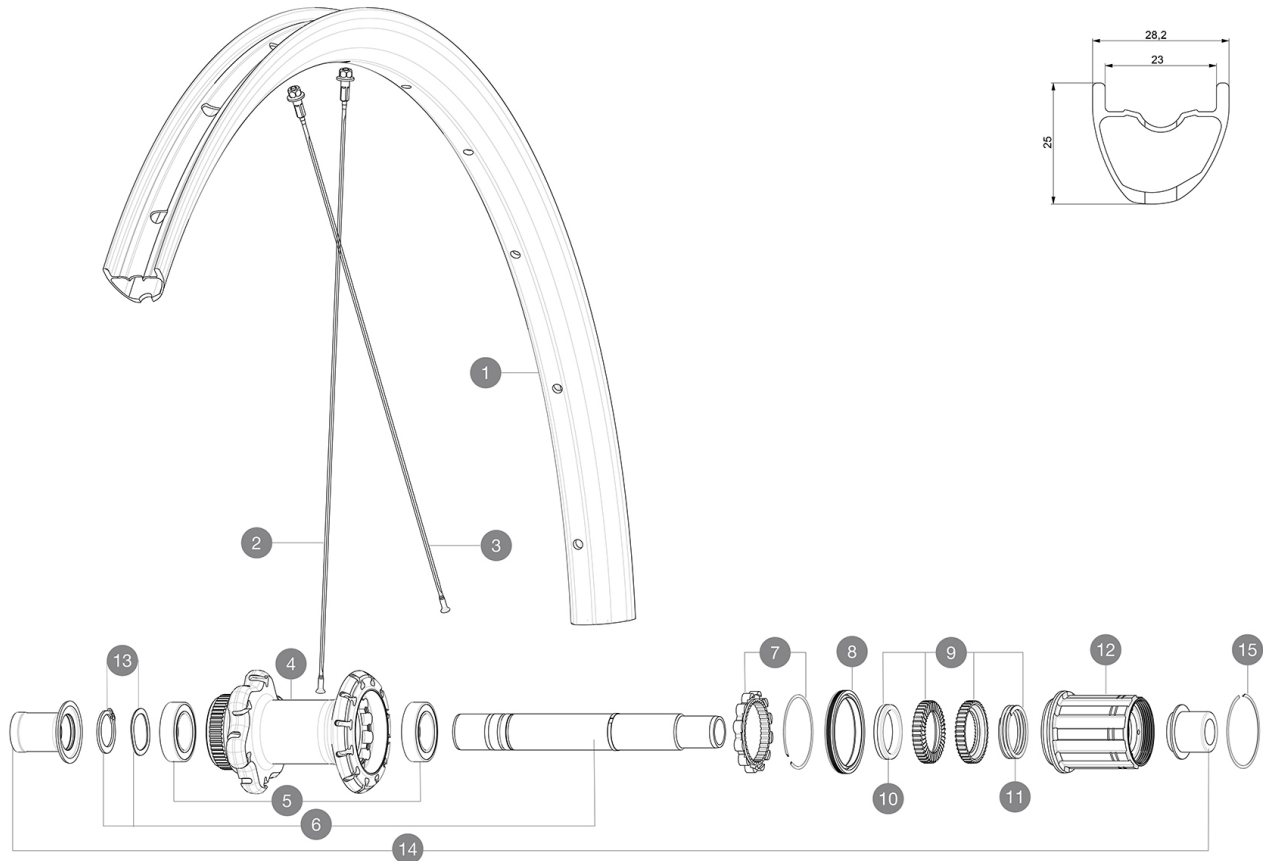
**MAVIC** Allroad Pro Carbon SL**REFERENZEN RÄDER**

ASTM CATEGORY 2 : road and offroad with jumps less than 15cm

For a longer longevity of the wheel, Mavic recommends that the total weight supported by the wheels doesn't exceed 120kg, bike included

Recommended tyre sizes: 28 to 64 mm (1.1" to 2.5")

Max. Pressure: see indication on wheel and tyre. If they differ, use the lowest of the 2

**RIMS**

&NBSP;:

1	LV4094500	Kit Rear rim Allroad Pro Carbon SL
1	LV2738900	KIT REAR RIM ALLROAD PRO CARBON SL -while stock last
	LV2620100	UST RIM TAPE 25mm (for 21-24mm wide rim)

**SPOKES**

2	LV3821800	KIT 12 FRT/REAR CROSSMAX PRO CARBON 29" EXTRA FLAT SPOKE 29
2	LV3668300	Kit 2 FRONT/NDS Allroad Pro Carbon SL stamped spoke 291 + al
3	LV2384400	KIT 12 FRONT + REAR NON-DRIVE SIDE BUTTED SPOKES 274mm CROSS

**HUB SHELLS**

4	N/A	NABENKÖRPER
5	LV2560400	KIT ID360 2 BEARINGS 17x28x7 + CIRCLIP + WAVED WASHER (QRM A
6	LV2252900	KIT ID360 CENTER LOCK 135/142mm AXLE WITH CIRCLIP
7	LV2252700	KIT ID360 INSERT SHAPED EAR LOBE > 2017
8	LV2251600	ID360 SEAL + GREASE
9	LV2251700	ID360 2 RATCHETS + SPRING + GREASE
10	LV2500500	Kit 3 ID360 pad for noise reduction
11	LV2251800	KIT 3 ID360 ROAD SPRINGS
12	LV3430100	HG11 Freewheel Body ID360
13	LV2560500	KIT ADJUST. SYSTEM QRM AUTO ID360 for 17x28x7 bearing
14	LV3811000	KIT ROAD ID360 RR CL ENDCAP (12MM)
15	LV2252200	KIT 2 REAR HUB RETENTION RINGS 48mm

# MAVIC Allroad Pro Carbon SL

## GELIEFERT MIT

Mavic tyre sealant (rear wheel) (355 466 01)	
Tyre sealant syringe	
Front QR adapters (996 941 01 for MTB or B41 043 01 for road)	
Rear QR adapters for Instant Drive 360 (B49 894 01)	
UST valve and accessories (129 838 01)	
User guide	

## COMPATIBILITY

Freewheel: Shimano/Sram, convertible to Campagnolo and XD-R with optional driver bodies	
Front axle: 12mm thru axle, easily convertible to quick release with included adapters. Convertible to 15mm with complete axle replacement	
Rear axle: 12mm thru axle, convertible to Quick Release with included adapters	

## Specifications

### FELGEN

- **Material** : 100% Unidirectional carbon fiber
  - **Height** : 25mm
  - **Drilling** : traditional  
Disc brake specific profile
  - **Valve hole diameter** : 6.5 mm
  - **Tire** : UST Tubeless and tubetype
  - **Internal width** : 23 mm
  - **ETRTO size** : 622x23TSS Road
- Hookless profile  
Use with Mavic Tubeless Tape  
UST Tubeless Ready

### SPEICHEN

- **Material** : steel
  - **Shape** : straight pull, flat, double butted
  - **Nipples** : aluminum, ABS
  - **Count** : 24 front and rear
  - **Lacing** : front crossed 2, rear Isopulse
- Isopulse

### RADNABE

- **Front and rear bodies** : aluminum
- **Axle material** : aluminum
- **Front** : Quick release, 12x100 and 15x100 through axle compatible
- **Rear** : Quick Release, 12x142 and 12x135 compatible  
Instant Drive 360  
QRM Auto

### VERSIONS

- **Color** : Black only
- **Disc standard** : Center Lock (R) only

### RADGEWICHTE

775