

# MAVIC Allroad Pro Carbon SL

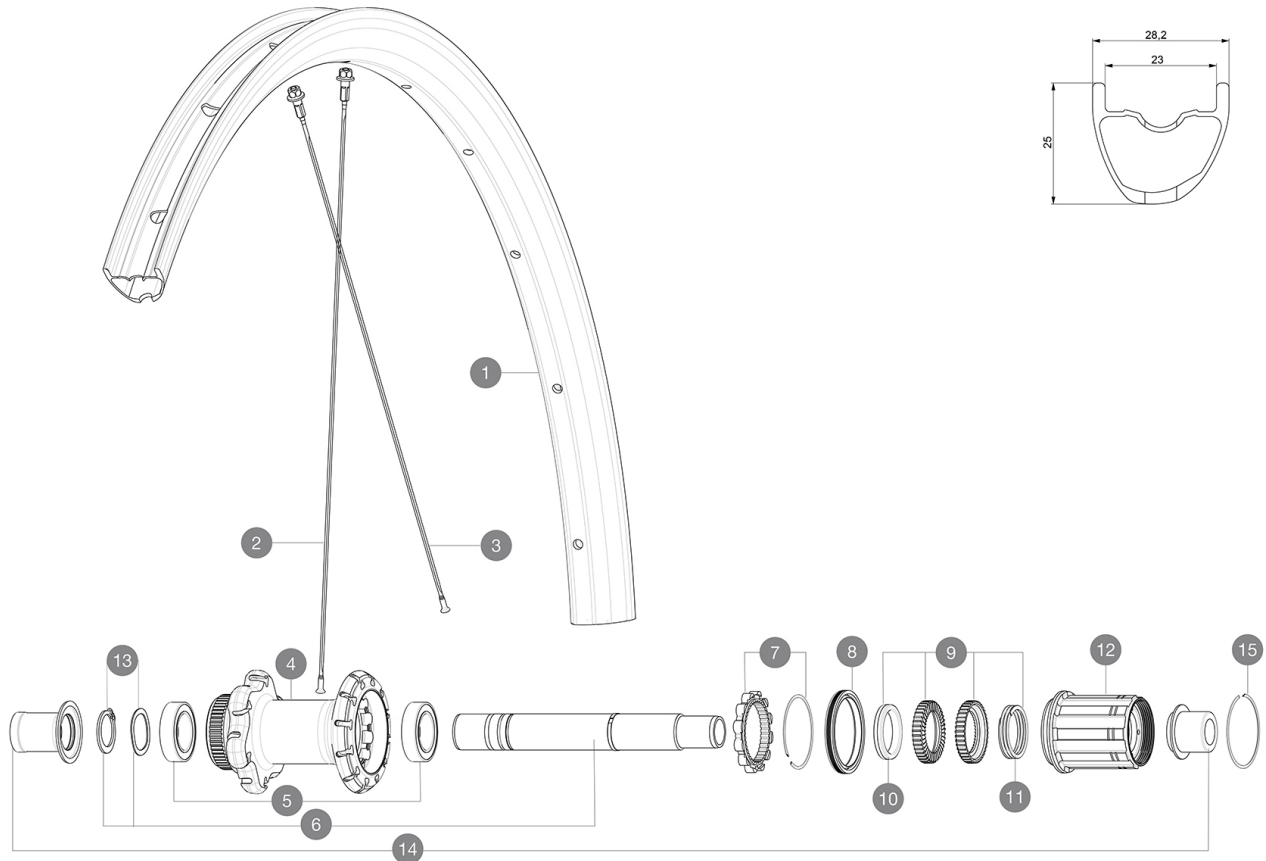
## REFERENZE RUOTE

ASTM CATEGORY 2 : road and offroad with jumps less than 15cm

For a longer longevity of the wheel, Mavic recommends that the total weight supported by the wheels doesn't exceed 120kg, bike included

Recommended tyre sizes: 28 to 64 mm (1.1" to 2.5")

Max. Pressure: see indication on wheel and tyre. If they differ, use the lowest of the 2



## RIMS



&NBSP;:

|   |           |  |
|---|-----------|--|
| 1 | LV4094500 | Kit Rear rim Allroad Pro Carbon SL                   |
| 1 | LV2738900 | KIT REAR RIM ALLROAD PRO CARBON SL -while stock last |
|   | LV2620100 | UST RIM TAPE 25mm (for 21-24mm wide rim)             |

## SPOKES

|   |           |  |
|---|-----------|--|
| 2 | LV3821800 | KIT 12 FRT/REAR CROSSMAX PRO CARBON 29" EXTRA FLAT SPOKE 29  |
| 2 | LV3668300 | Kit 2 FRONT/NDS Allroad Pro Carbon SL stamped spoke 291 + al |
| 3 | LV2384400 | KIT 12 FRONT + REAR NON-DRIVE SIDE BUTTED SPOKES 274mm CROSS |

## HUB SHELLS

|    |           |  |
|----|-----------|--|
| 4  | N/A       | CORPO MOZZO  |
| 5  | LV2560400 | KIT ID360 2 BEARINGS 17x28x7 + CIRCLIP + WAVED WASHER (QRM A |
| 6  | LV2252900 | KIT ID360 CENTER LOCK 135/142mm AXLE WITH CIRCLIP            |
| 7  | LV2252700 | KIT ID360 INSERT SHAPED EAR LOBE > 2017                      |
| 8  | LV2251600 | ID360 SEAL + GREASE  |
| 9  | LV2251700 | ID360 2 RATCHETS + SPRING + GREASE                           |
| 10 | LV2500500 | Kit 3 ID360 pad for noise reduction                          |
| 11 | LV2251800 | KIT 3 ID360 ROAD SPRINGS                                     |
| 12 | LV3430100 | HG11 Freewheel Body ID360                                    |
| 13 | LV2560500 | KIT ADJUST. SYSTEM QRM AUTO ID360 for 17x28x7 bearing        |
| 14 | LV3811000 | KIT ROAD ID360 RR CL ENDCAP (12MM)                           |
| 15 | LV2252200 | KIT 2 REAR HUB RETENTION RINGS 48mm                          |

# MAVIC Allroad Pro Carbon SL

## VENDUTO CON

|  |  |
|--|--|
| Mavic tyre sealant (rear wheel)<br>(355 466 01)                  |  |
| Tyre sealant syringe   |  |
| Front QR adapters<br>(996 941 01 for MTB or B41 043 01 for road) |  |
| Rear QR adapters for Instant Drive 360<br>(B49 894 01)           |  |
| UST valve and accessories<br>(129 838 01)                        |  |
| User guide   |  |

## COMPATIBILITY

|  |  |
|--|--|
| Freewheel: Shimano/Sram, convertible to Campagnolo and XD-R with optional driver bodies  |  |
| Front axle: 12mm thru axle, easily convertible to quick release with included adapters. Convertible to 15mm with complete axle replacement |  |
| Rear axle: 12mm thru axle, convertible to Quick Release with included adapters   |  |

## Specifications

### CERCHIONI

- **Material** : 100% Unidirectional carbon fiber
- **Height** : 25mm
- **Drilling** : traditional  
Disc brake specific profile
- **Valve hole diameter** : 6.5 mm
- **Tire** : UST Tubeless and tubetype
- **Internal width** : 23 mm
- **ETRTO size** : 622x23TSS Road  
Hookless profile  
Use with Mavic Tubeless Tape  
UST Tubeless Ready

### RAGGI

- **Material** : steel
- **Shape** : straight pull, flat, double butted
- **Nipples** : aluminum, ABS
- **Count** : 24 front and rear
- **Lacing** : front crossed 2, rear Isopulse  
Isopulse

### MOZZO

- **Front and rear bodies** : aluminum
- **Axle material** : aluminum
- **Front** : Quick release, 12x100 and 15x100 through axle compatible
- **Rear** : Quick Release, 12x142 and 12x135 compatible  
Instant Drive 360  
QRM Auto

### VERSIONS

- **Color** : Black only
- **Disc standard** : Center Lock (R) only

### PESI RUOTE

775