

ASTM CATEGORY 1 : road only

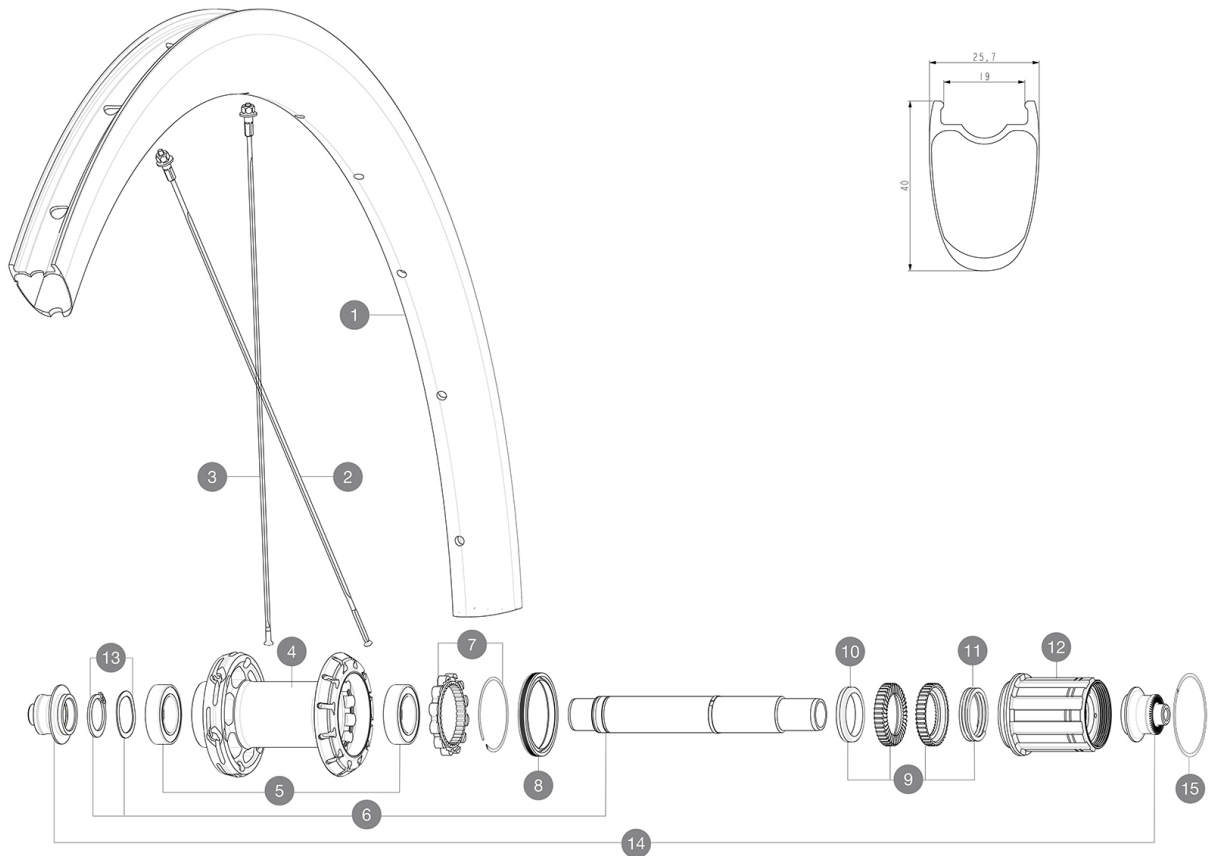
For a longer longevity of the wheel, Mavic recommends that the total weight supported by the wheels doesn't exceed 120kg, bike included

Recommended tyre sizes: 25 to 32 mm

Max. Pressure: see indication on wheel and tyre. If they differ, use the lowest of the 2

REFERENCES WHEELS

R36731 Cosmic SL 40 Rr



RIMS



&NBSP;:

| | | |
|---|-----------|--|
| 1 | LV4092700 | Kit Rear rim Cosmic SL 40 RB |
| | LV3720100 | 25mm UST Tape for 19 to 22mm Road Rims |

SPOKES

| | | |
|---|-----------|--|
| 2 | LV4161600 | Kit 12 rear DS butted stainless spoke 260mm Com Pro Carbon U |
| 3 | LV4162800 | Kit 12 rear NDS Cosmic SL 40 RB butted stainless spoke 280mm |

HUB SHELLS

| | | |
|----|-----------|---|
| 4 | N/A | HUB BODY |
| 5 | LV2560400 | KIT 2 BEARINGS 17x28x7 + WAVED WASHER + CLIP |
| 6 | LV2252800 | KIT ID360 UB REAR AXLE W/CLIP/WAVED WASHER |
| 7 | LV2252700 | KIT ID360 INSERT SHAPED EAR LOBE > 2017 |
| 8 | LV2251600 | KIT ID360 SEAL + GREASE |
| 9 | LV2251700 | KIT ID360 2 RATCHETS + SPRING + GREASE |
| 10 | LV2500500 | KIT ID360 3 PADS NOISE REDUCING |
| 11 | LV2251800 | KIT 3 ID360 ROAD SPRINGS |
| 12 | LV3430100 | HG11 Freewheel Body ID360 |
| 13 | LV2560500 | KIT ADJUST. SYSTEM QRM AUTO ID360 for 17x28x7 bearing |
| 14 | LV2253100 | KIT REAR AXLE ADAPTOR QUICK RELEASE ID360 |
| 15 | LV2252200 | KIT 2 REAR HUB RETENTION RINGS 48mm |

MAVIC Cosmic SL 40

2021
REAR

DELIVERED WITH

| | |
|---|--|
| BR301 quick releases (V24 501 01 frt, V24 502 01 rear) | |
| Carbon brake pads (V24 603 01 Shimano/Sram, V24 604 01 Campagnolo) | |
| UST valve and accessories (129 838 01) | |
| Pre-installed tubeless rim tape | |
| User guide | |

COMPATIBILITY

| | |
|---|--|
| Freewheel: Shimano/Sram, convertible to Campagnolo and XD-R with optional driver bodies | |
| Front axle: Quick Release only | |
| Rear axle: Quick Release only | |

Specifications

RIMS

- **Material** : 100% carbon fiber
 - **Height** : 40 mm
 - **Drilling** : traditional
 - **Tire** : UST Tubeless and tubetype
 - **Internal width** : 19 mm
 - **ETRTO size** : 622x19TC Road
- Use with Mavic Tubeless Tape
UST
iTgMAX

SPOKES

- **Material** : steel
- **Shape** : straight pull, flat, double butted
- **Nipples** : aluminum, ABS
- **Count** : front 18, rear 20
- **Lacing** : front crossed 2, rear Isopulse Isopulse

WHEEL HUB

- **Front and rear bodies** : aluminum
 - **Axle material** : aluminum
- Infinity Hub
Instant Drive 360
QRM Auto

VERSIONS

- **Freewheel** : Shimano/Sram

WHEEL WEIGHTS

895