

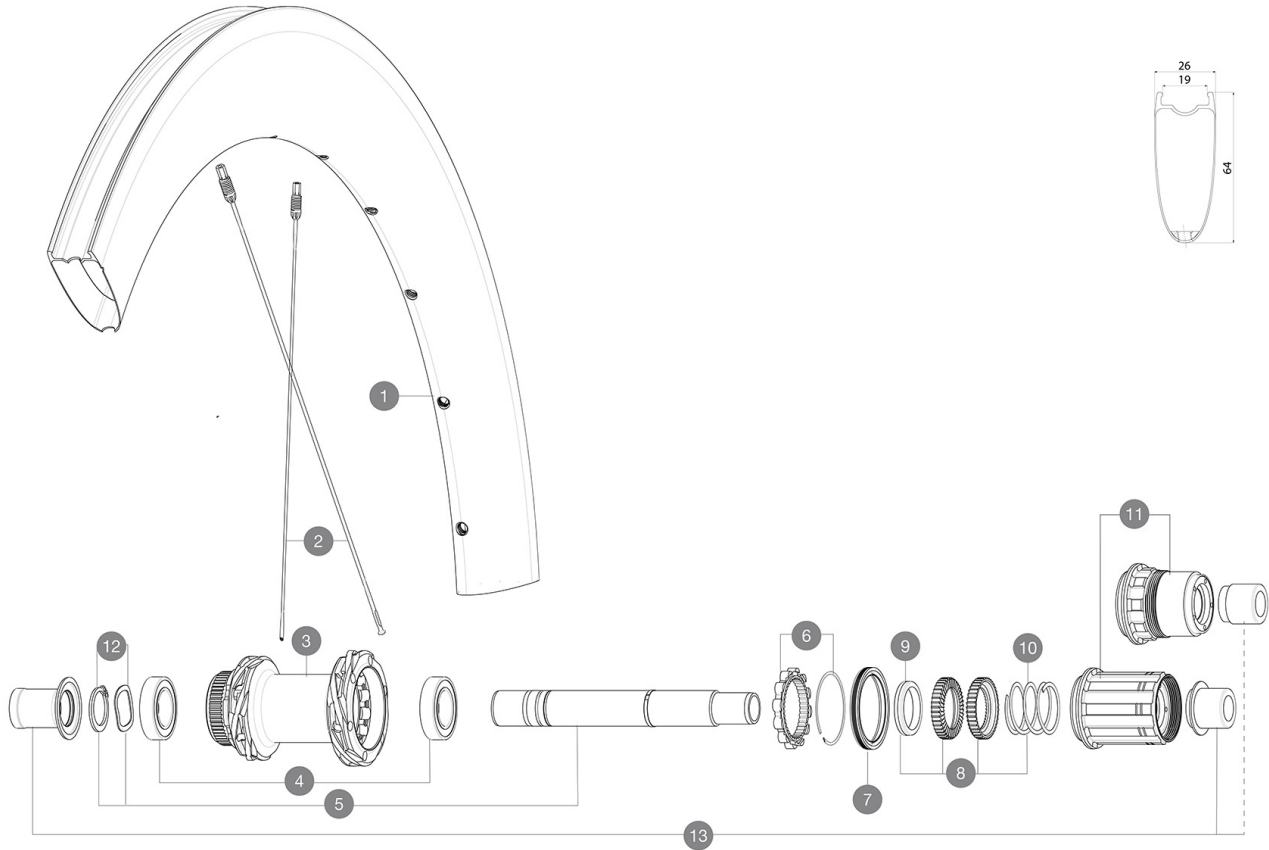
**MAVIC** *Cosmic SLR 65 Disc***RUEDAS REFERENCIAS**

ASTM CATEGORY 2 : road and offroad with jumps less than 15cm

For a longer longevity of the wheel, Mavic recommends that the total weight supported by the wheels doesn't exceed 120kg, bike included

Recommended tyre sizes: 25 to 32 mm

Max. Pressure: see indication on wheel and tyre. If they differ, use the lowest of the 2

**RIMS**

&NBSP;:

**1** LV4094900 Kit Front/Rear rim Cosmic SLR 65 Disc

**SPOKES**

**2** LV4164900 Kit 12 CosmicSLR65 Disc aero sspk M6 259

**HUB SHELLS**

<b>3</b>	N/A	CUERPO DE BUJE
<b>4</b>	LM4007600	HUB BEARINGS 17x30x7 6903 x 2
<b>5</b>	LV2373400	KIT ID360 135/142 DCL L1 AXLE WITH CLIP
<b>6</b>	LV2252700	KIT ID360 INSERT SHAPED EAR LOBE > 2017
<b>7</b>	LV2251600	ID360 SEAL + GREASE
<b>8</b>	LV2251700	ID360 2 RATCHETS + SPRING + GREASE
<b>9</b>	LV2500500	Kit 3 ID360 pad for noise reduction
<b>10</b>	LV2251800	KIT 3 ID360 ROAD SPRINGS
<b>11</b>	LV3430100	HG11 Freewheel Body ID360
<b>11</b>	LV2580100	FREEHUB BODY XD Road ID360
<b>12</b>	LV2373000	KIT ADJUST. SYSTEM QRM AUTO ID360 for 17x30x7 bearing
<b>13</b>	LV3811000	KIT ROAD ID360 RR CL ENDCAP (12MM)

# MAVIC Cosmic SLR 65 Disc

2021  
REAR

## ENTREGADO CON

UST valve and accessories (129 838 01)	
User guide	

## COMPATIBILITY

Freewheel: Shimano/Sram, convertible to Campagnolo and XD-R with optional driver bodies	
Front axle: 12x100 thru axle, easily convertible to quick release with included adapters. Not compatible with 15mm through axles.	
Rear axle: 12mm thru axle, convertible to Quick Release with optional adapters	

## Specifications

### LLANTAS

- **Material** : 100% carbon fiber
  - **Height** : 64mm
- Disc brake specific profile
- **Tire** : UST Tubeless and tubetype
  - **Internal width** : 19 mm
  - **ETRTO size** : 622x19TC Road

Fore Carbon  
UST

### RADIOS

- **Material** : steel
- **Shape** : straight pull, elliptical aero, double butted (patented)
- **Nipples** : Fore integrated aluminum
- **Count** : 24 front and rear
- **Lacing** : front and rear crossed 2, contactless

### BUJE DE LA RUEDA

- **Front and rear bodies** : aluminum
  - **Axle material** : aluminum
  - **Front** : Quick release and 12x100 through axle compatible
  - **Rear** : Quick Release, 12x142 and 12x135 compatible
- Infinity Hub  
Instant Drive 360  
QRM Auto

### VERSIONS

- **Disc standard** : Center Lock (R) only
- **Freewheel** : Shimano/Sram or XD-Road

### PESOS DE RUEDAS

840