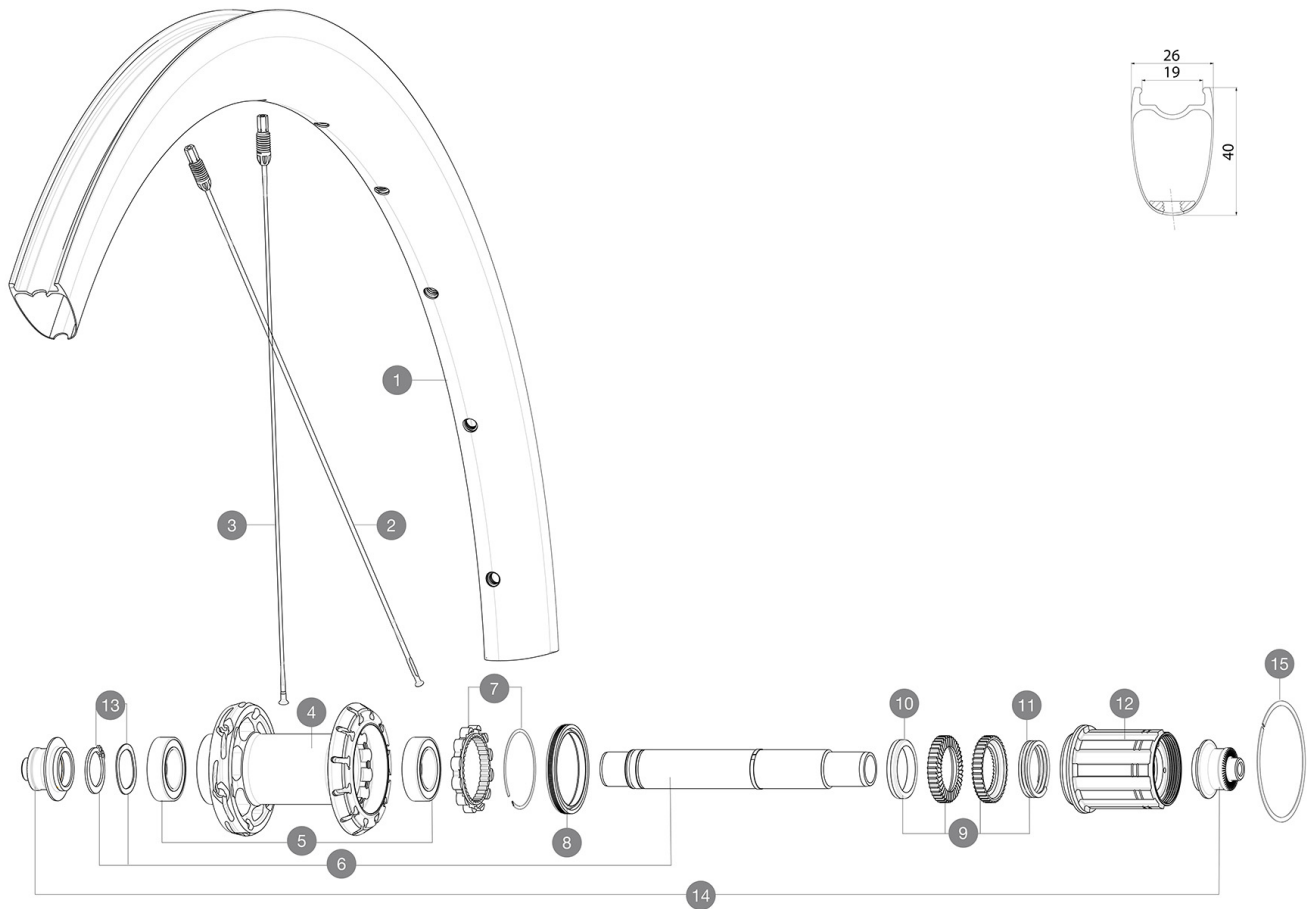


ASTM CATEGORY 1 : road only

## REFERENCES WHEELS



### RIMS



&NBSP;:

1	LV4094800	Kit Rear rim Cosmic SLR 40 RB
---	-----------	-------------------------------

### SPOKES

2	LV3669400	Kit 12 DS Cosmic SLR40 aero ss spk266 M6
3	LV3669300	Kit 12 NDS Cosmic SLR40 aero ss spk285M6

### HUB SHELLS

4	N/A	HUB BODY
5	LV2560400	KIT 2 BEARINGS 17x28x7 + WAVED WASHER + CLIP
6	LV2252800	KIT ID360 UB REAR AXLE W/CLIP/WAVED WASHER
7	LV2252700	KIT ID360 INSERT SHAPED EAR LOBE > 2017
8	LV2251600	KIT ID360 SEAL + GREASE
9	LV2251700	KIT ID360 2 RATCHETS + SPRING + GREASE
10	LV2500500	KIT ID360 3 PADS NOISE REDUCING
11	LV2251800	KIT 3 ID360 ROAD SPRINGS
12	LV3430100	HG11 Freewheel Body ID360
13	LV2560500	KIT ADJUST. SYSTEM QRM AUTO ID360 for 17x28x7 bearing
14	LV2253100	KIT REAR AXLE ADAPTOR QUICK RELEASE ID360
15	LV2252200	KIT 2 REAR HUB RETENTION RINGS 48mm

**MAVIC** *Cosmic SLR 40***DELIVERED WITH**

BR601 Titanium quick releases (323 485 01 frt, 323 486 01 rear)	
Carbon brake pads (V24 603 01 Shimano/Sram, V24 604 01 Campagnolo)	
UST valve and accessories (129 838 01)	
User guide	

**COMPATIBILITY**

Freewheel: Shimano/Sram, convertible to Campagnolo and XD-R with optional driver bodies	
---	--

**Specifications****RIMS**

- **Material** : 100% carbon fiber
- **Height** : 40 mm
- **Valve hole diameter** : 6.5 mm
- **Tire** : UST Tubeless and tubetype
- **Internal width** : 19 mm
- **ETRTO size** : 622x19TC Road Fore Carbon UST Tubeless Ready

**SPOKES**

- **Material** : steel
- **Shape** : straight pull, elliptical aero, double butted (patented)
- **Nipples** : Fore integrated aluminum
- **Count** : front 18, rear 20
- **Lacing** : front radial, rear Isopulse Isopulse

**WHEEL HUB**

- **Front and rear bodies** : aluminum
- **Axle material** : aluminum
- Infinity Hub
- Instant Drive 360
- QRM Auto

**VERSIONS**

- **Freewheel** : Shimano/Sram

**WHEEL WEIGHTS**

750